

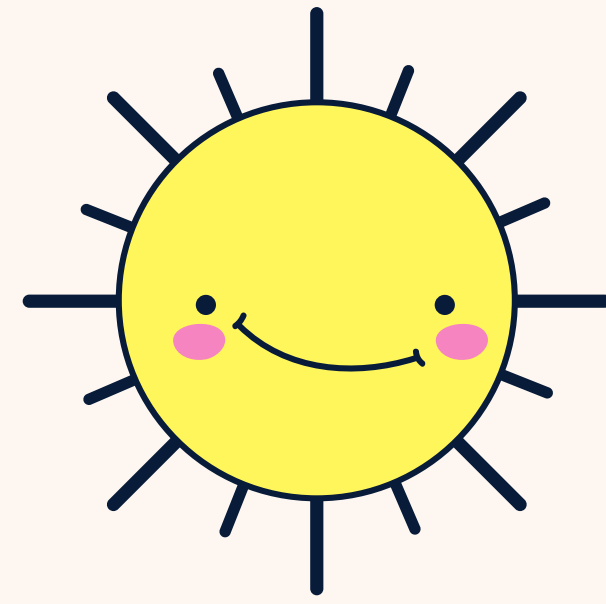
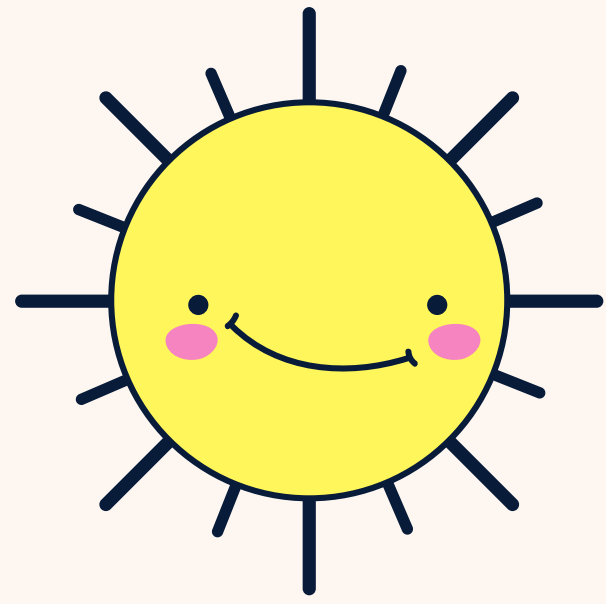
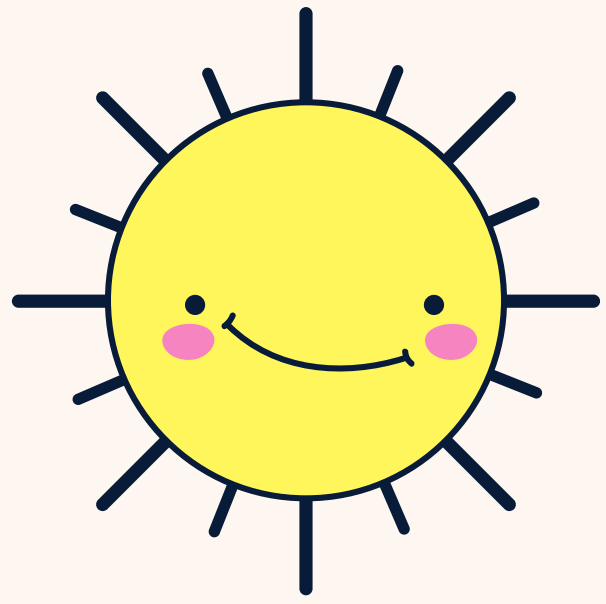
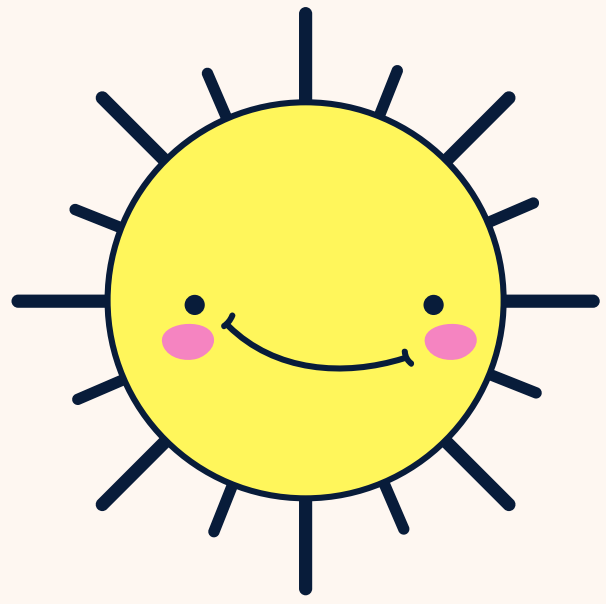


CUADERNILLO DE MATEMÁTICAS

@profe_mireia



CONTEO



5

3

2

4

1



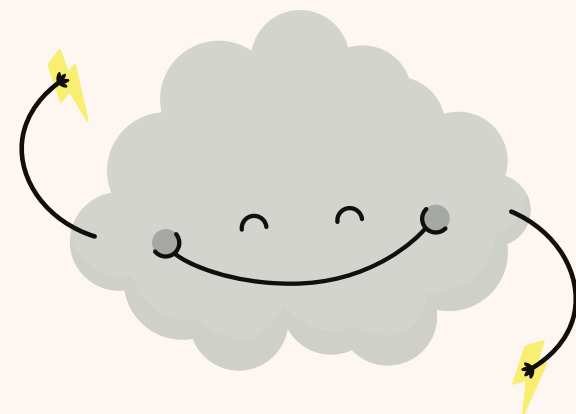
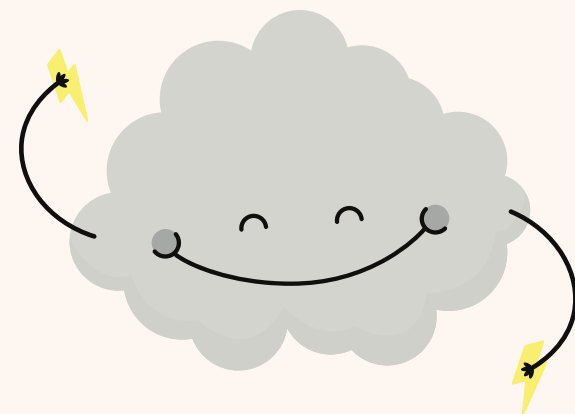
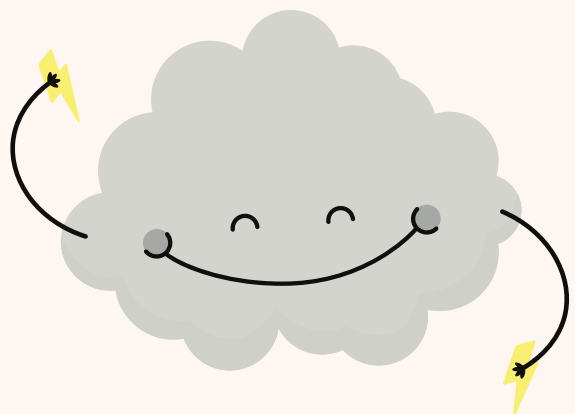
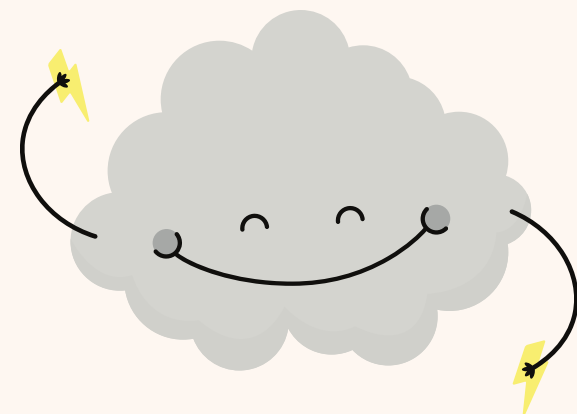
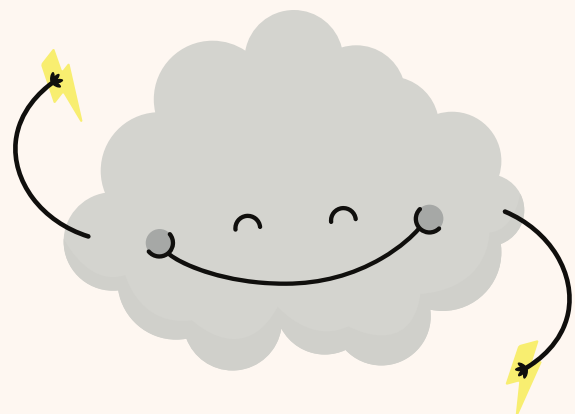
1

4

3

5

2






4


5

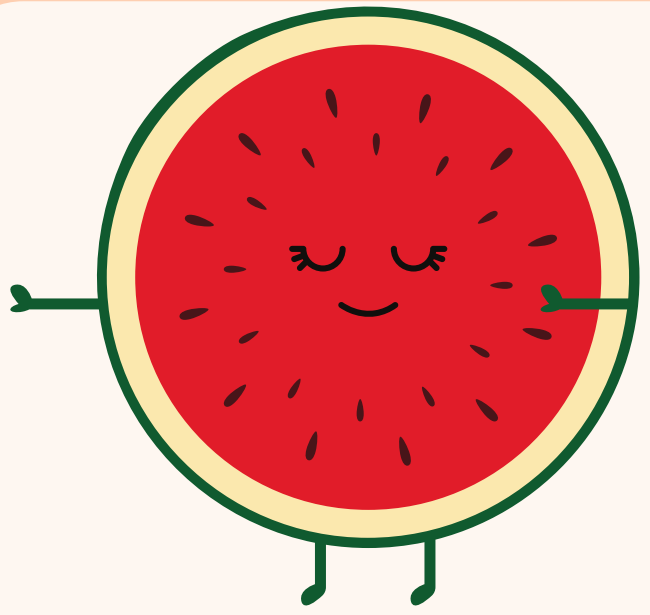
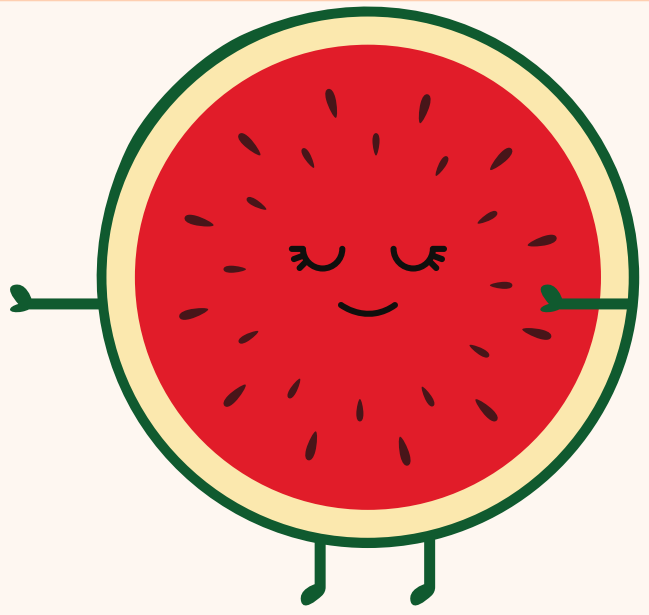
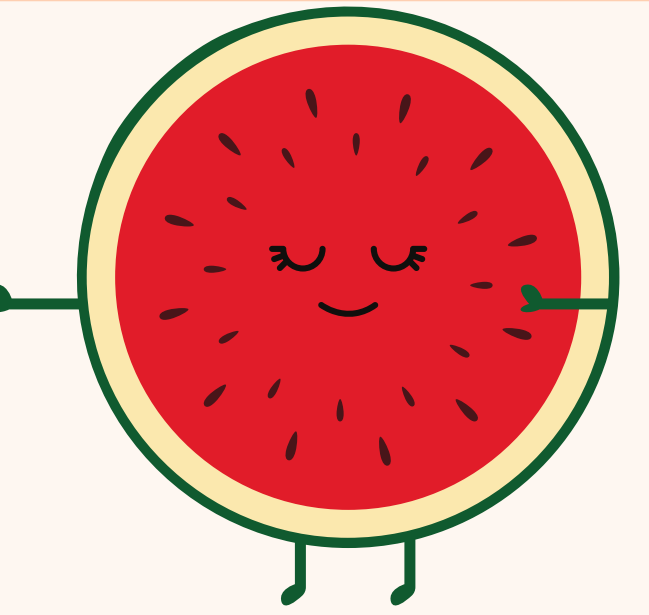
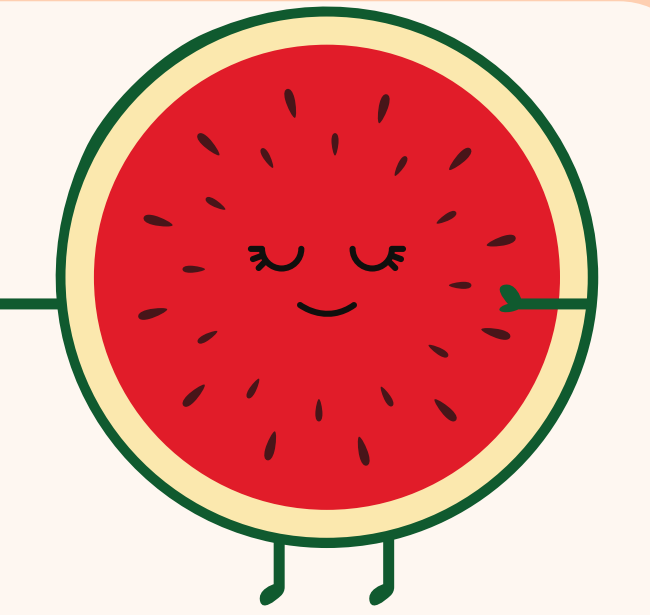
1

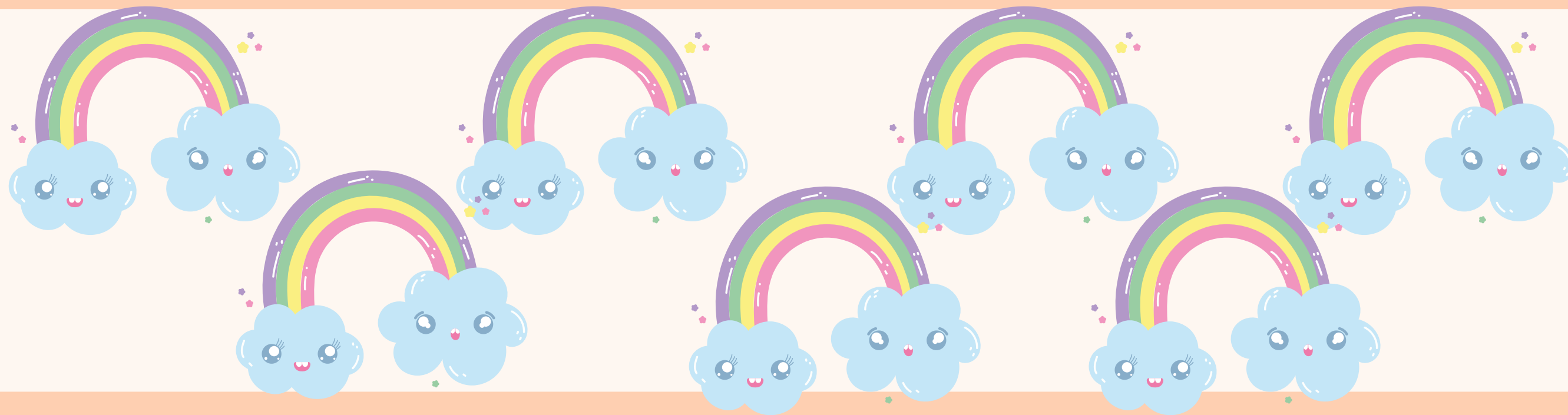
2

3

				
2	1	4	3	5

				
3	5	1	2	4

				
1	4	2	5	3



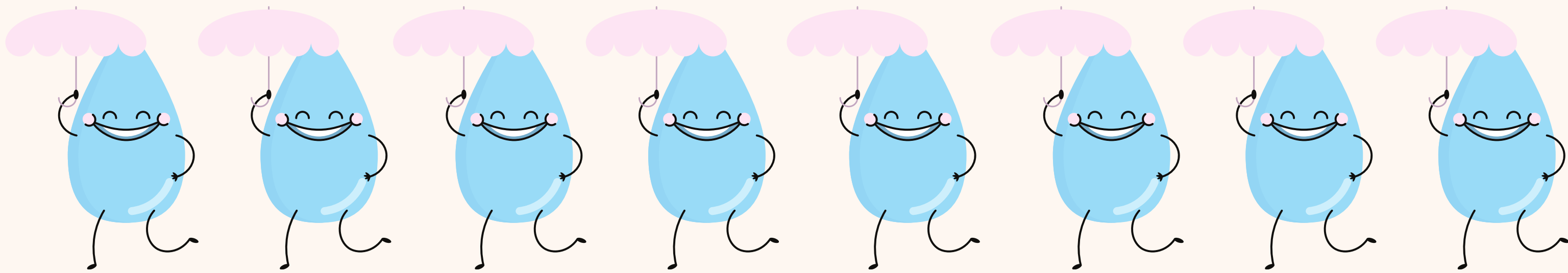
6

9

8

7

10



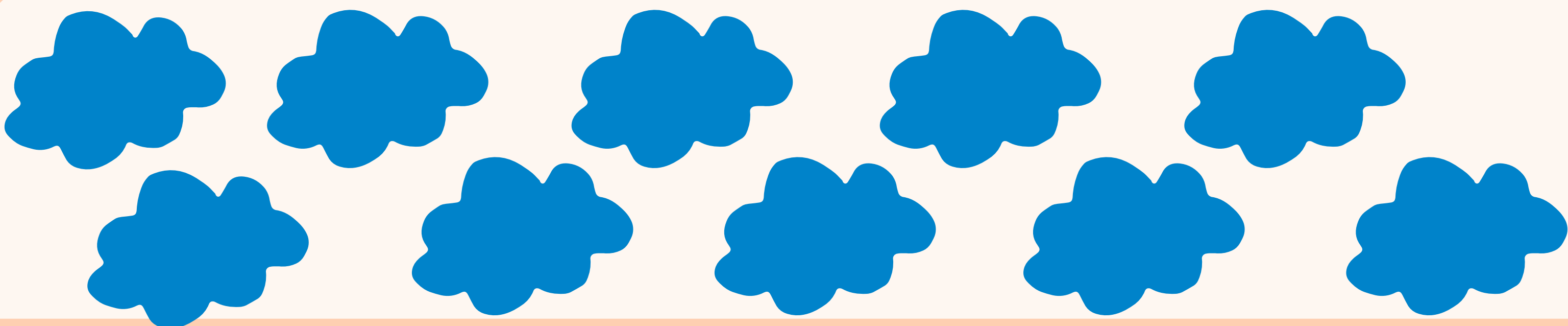
7

10

9

6

8



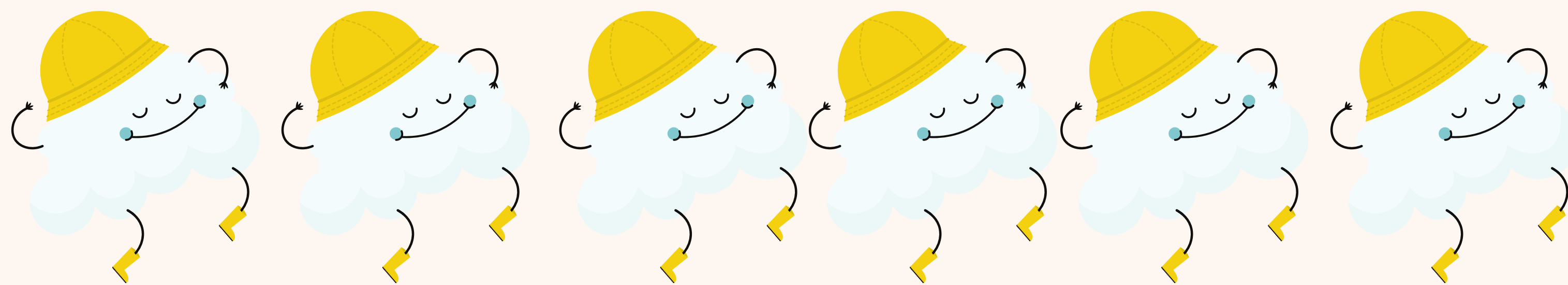
10

8

6

9

7



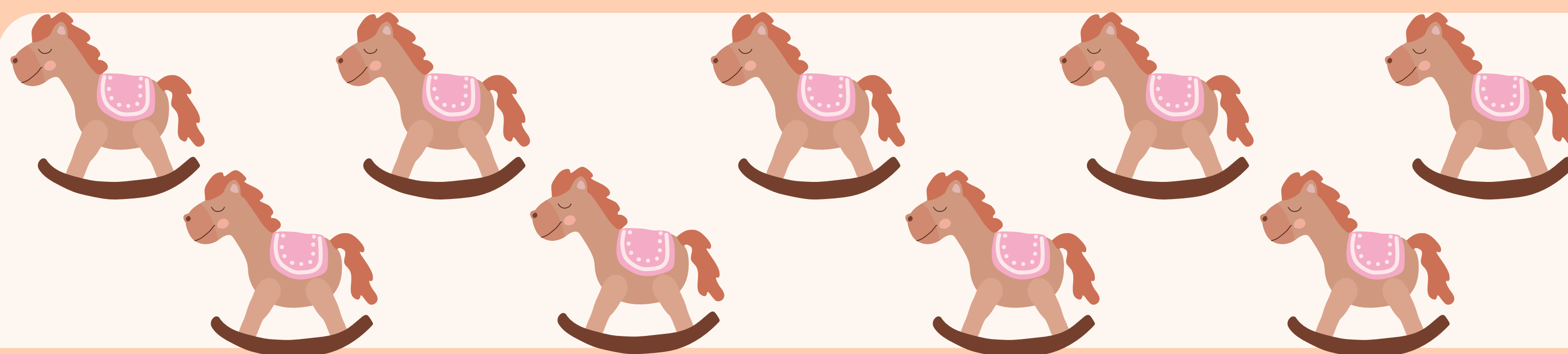
8

6

10

9

7



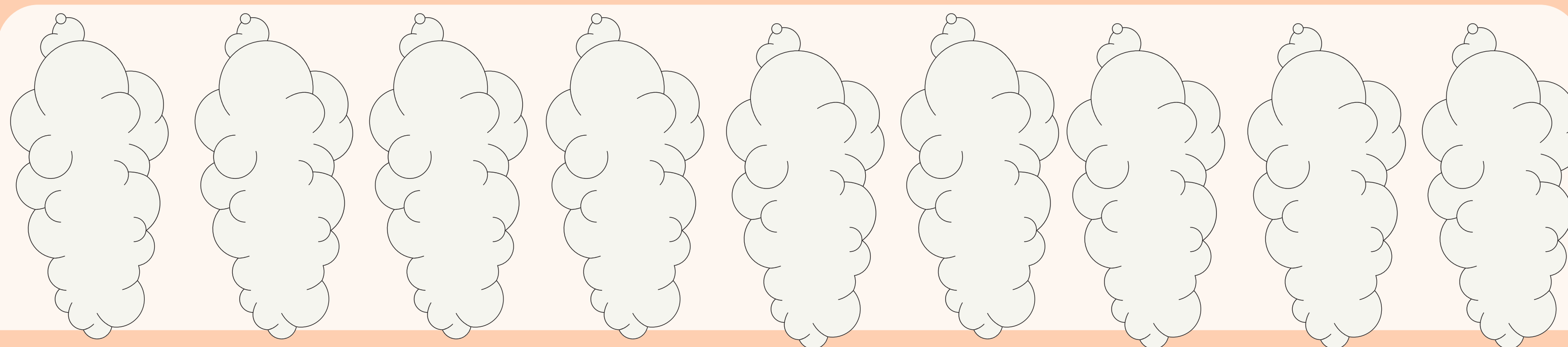
9

7

6

10

8



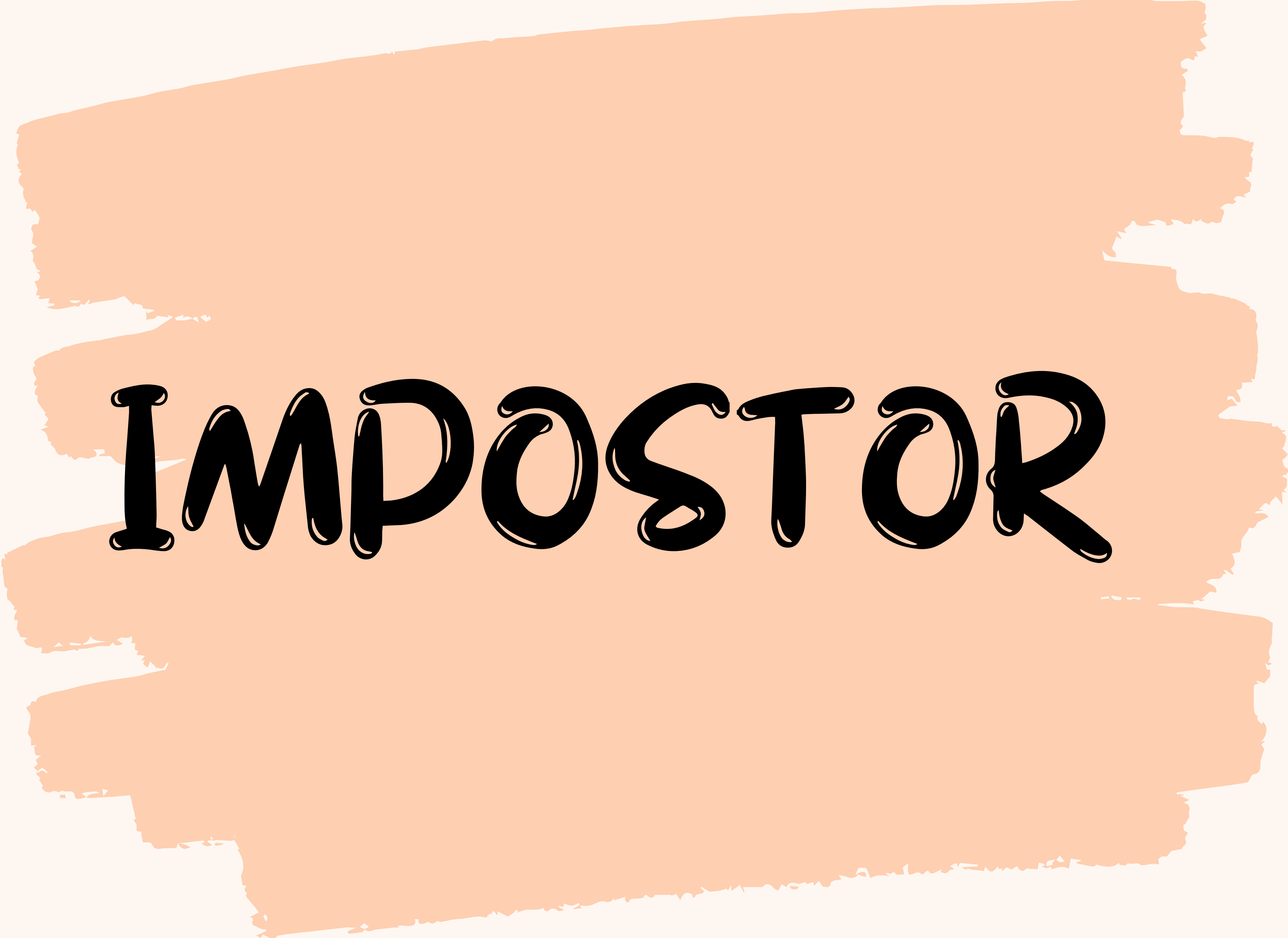
10

9

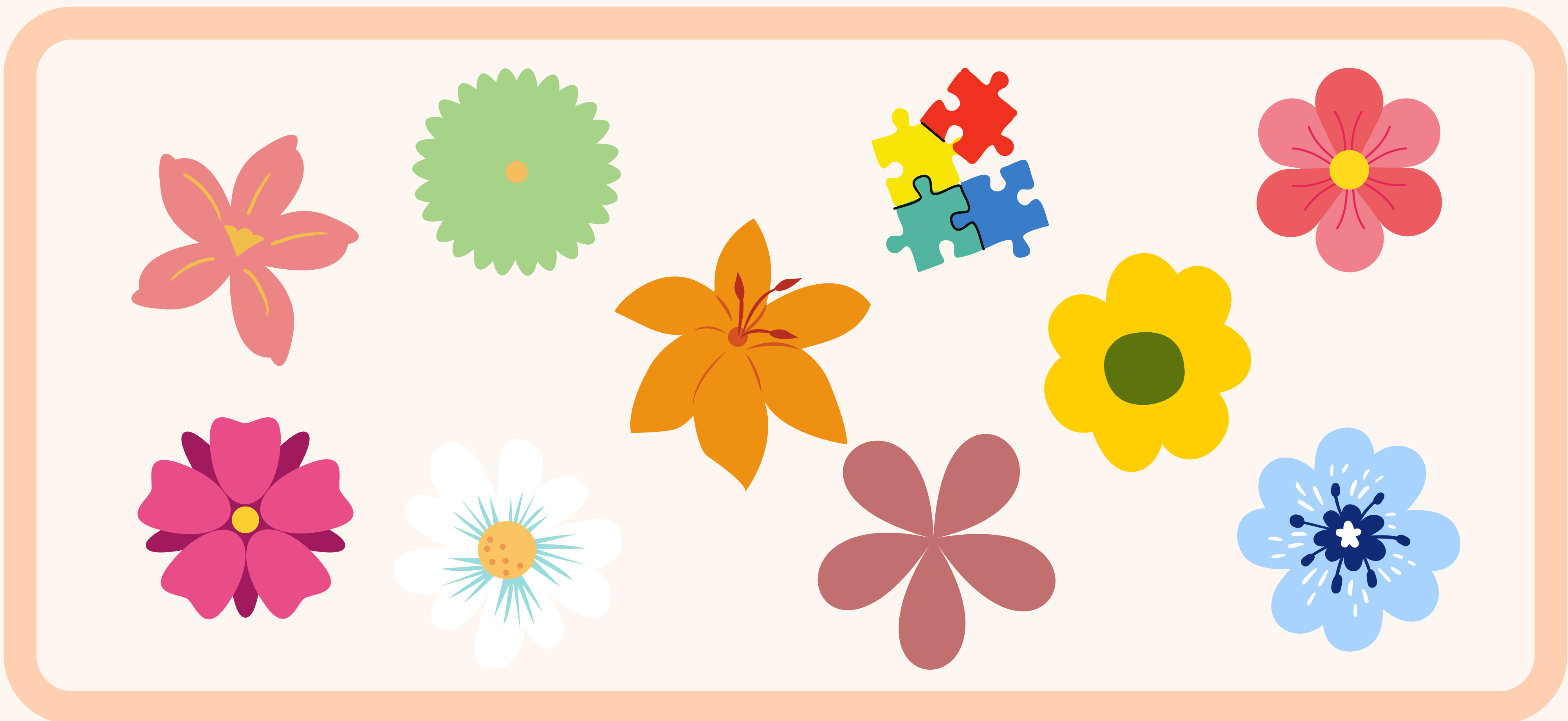
7

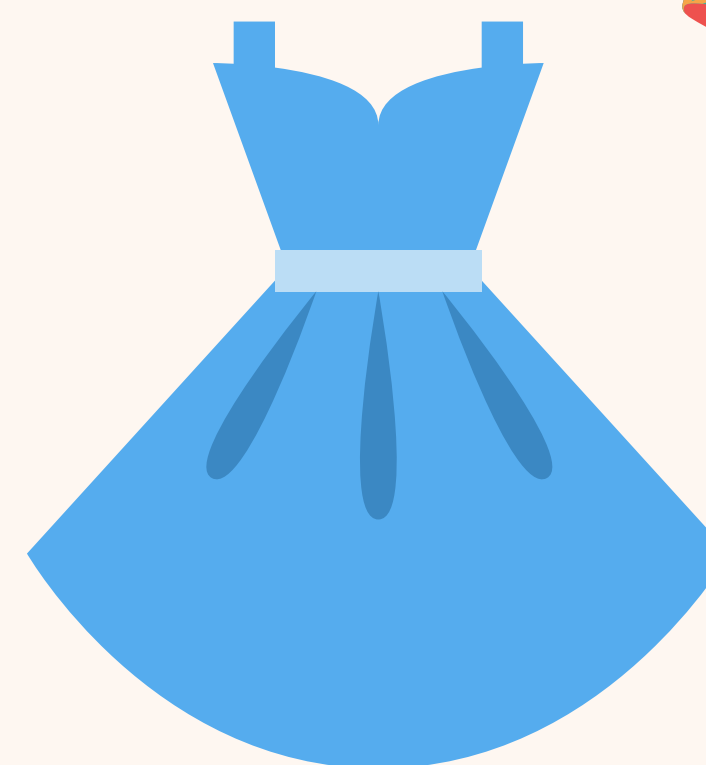
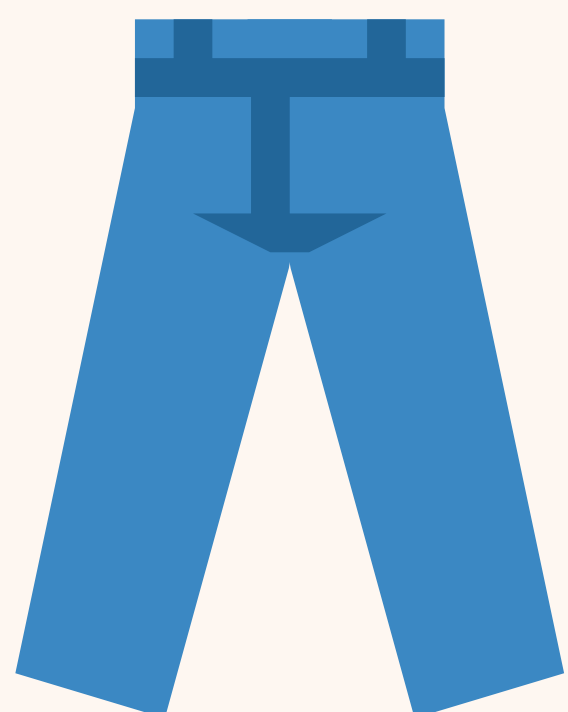
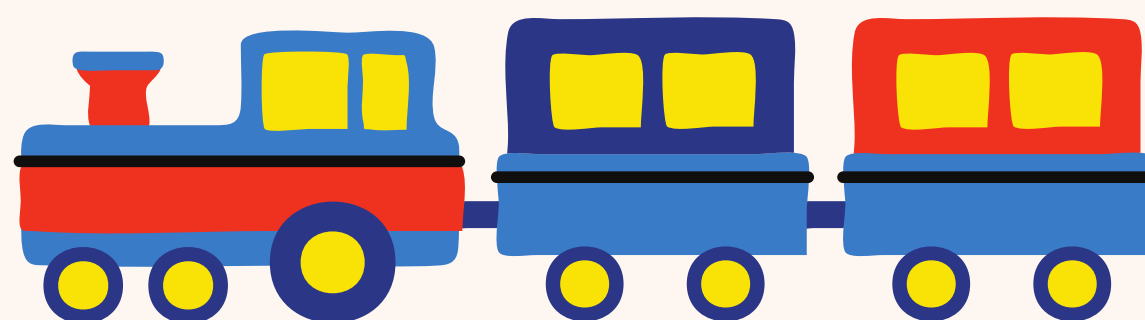
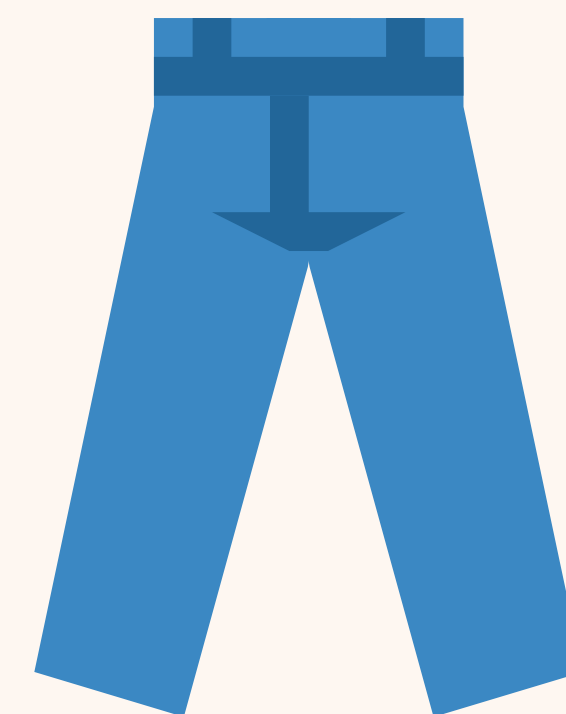
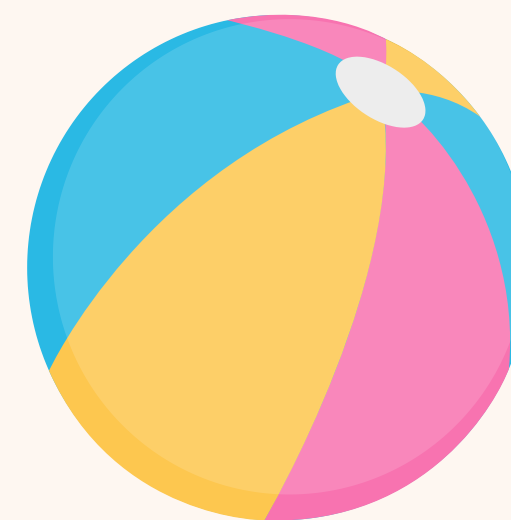
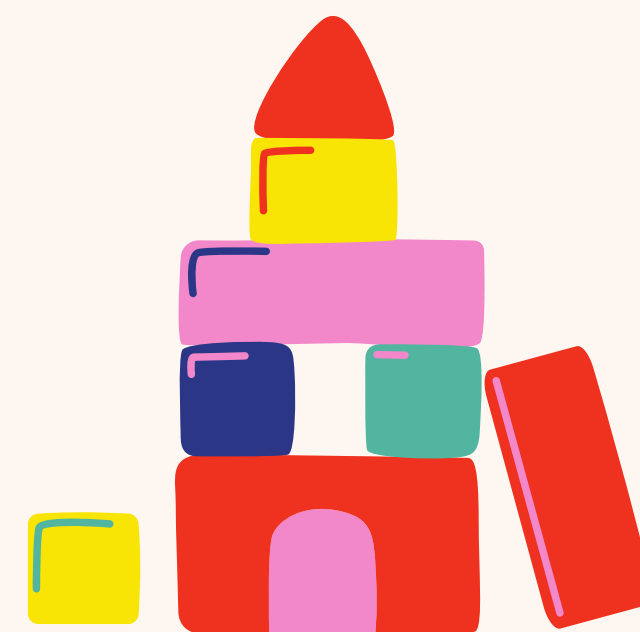
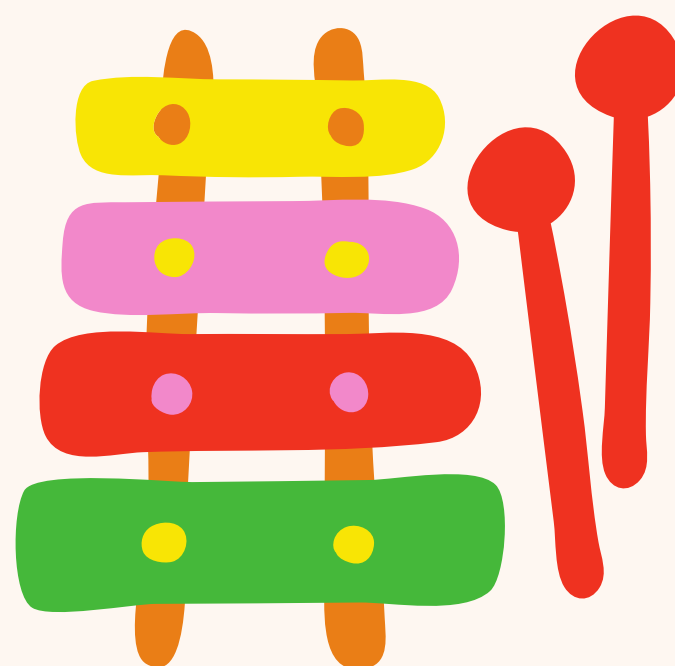
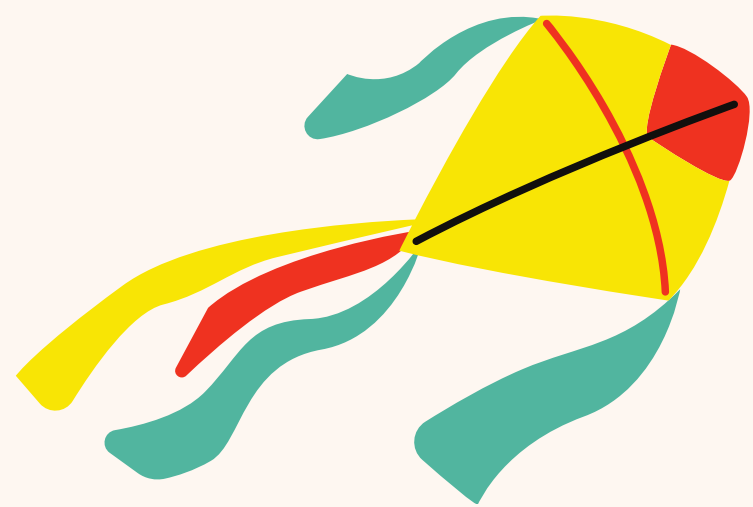
8

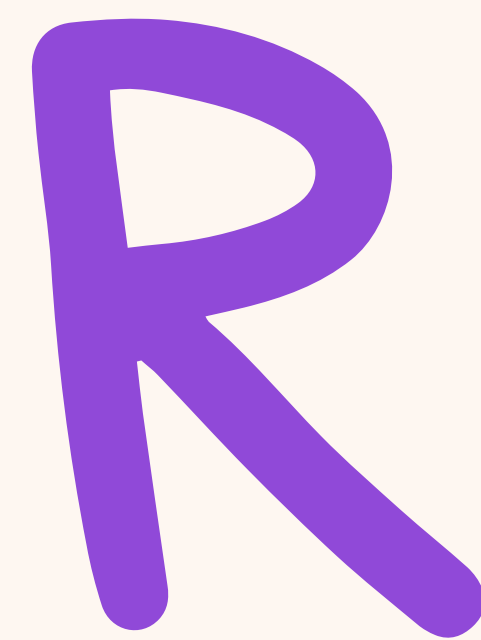
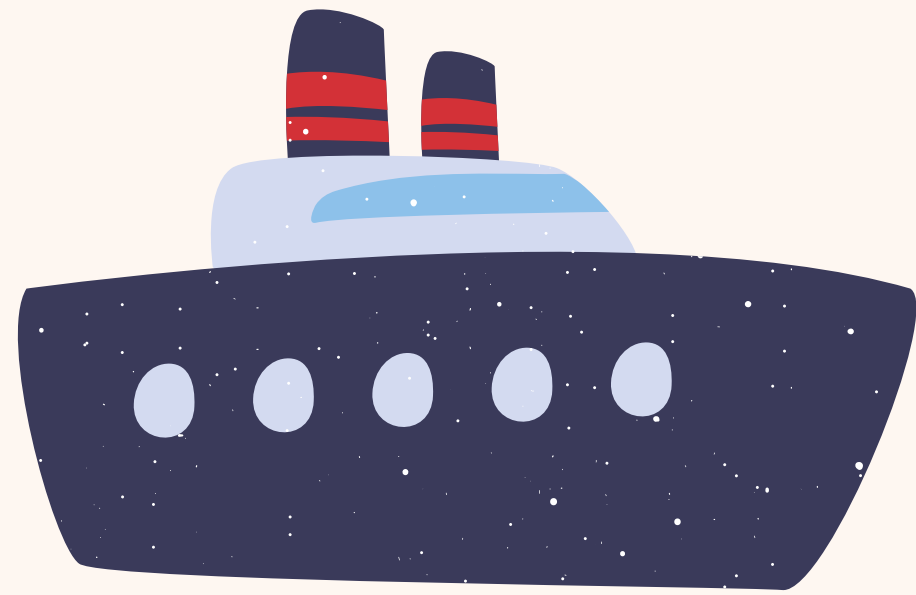
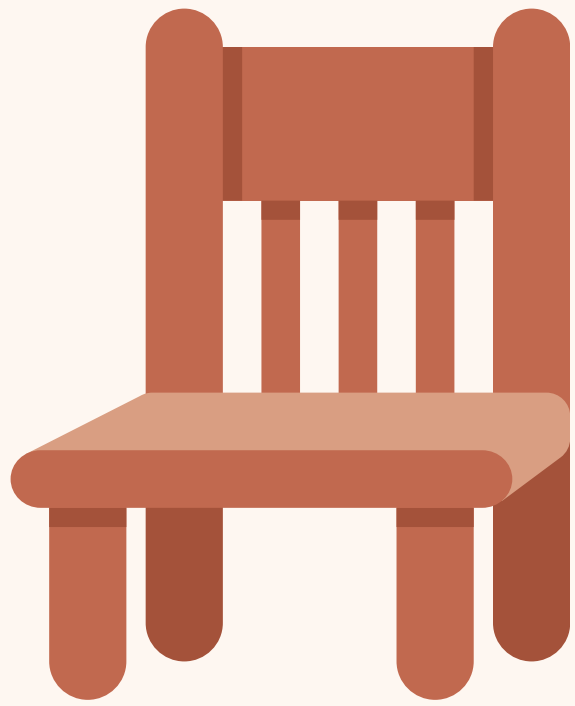
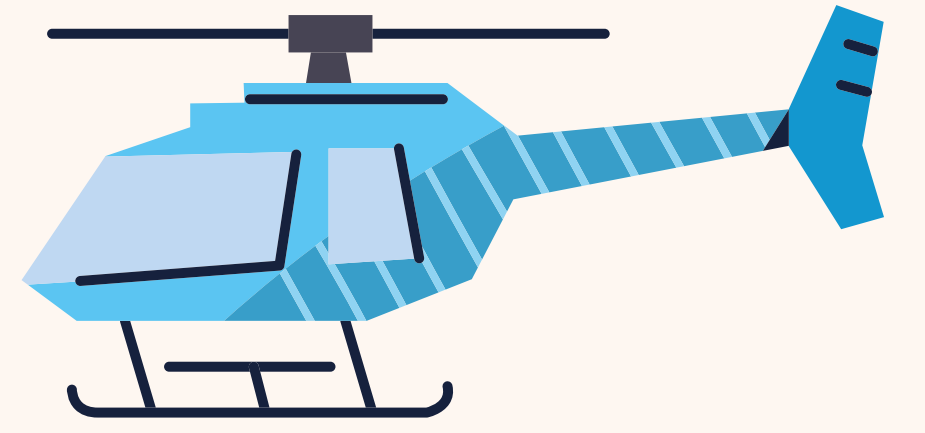
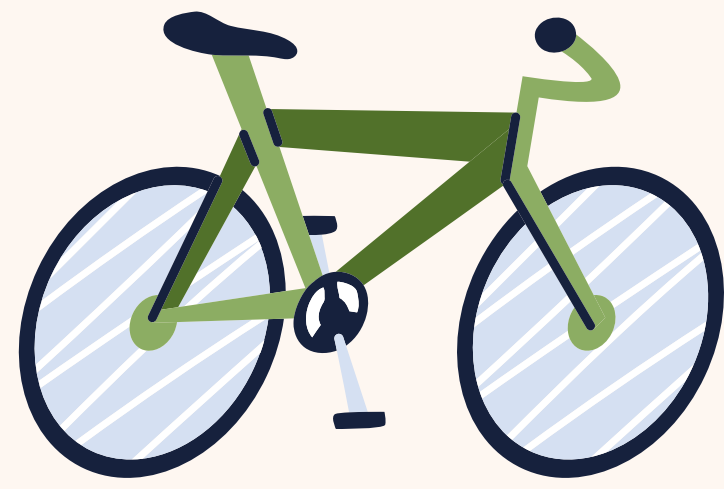
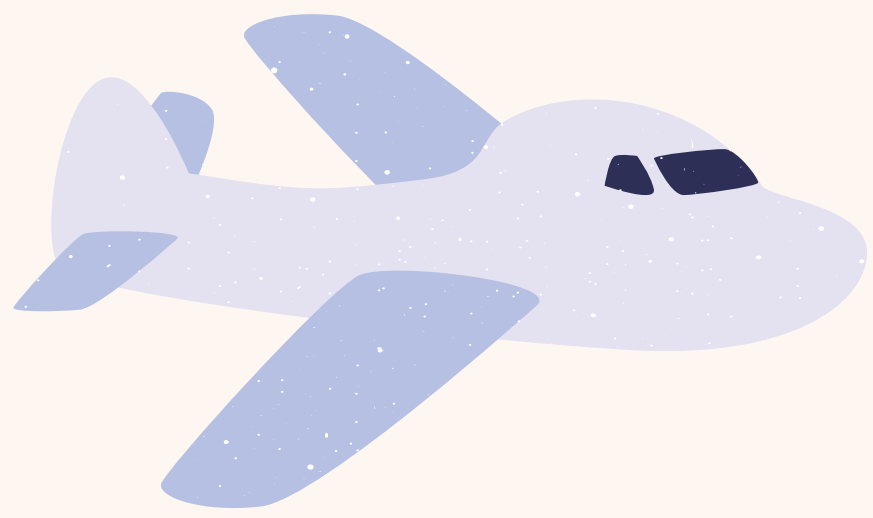
6



IMPOSTOR

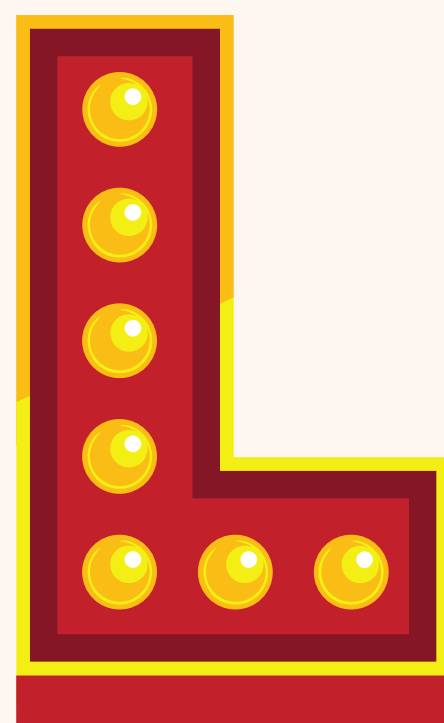






R

A



P



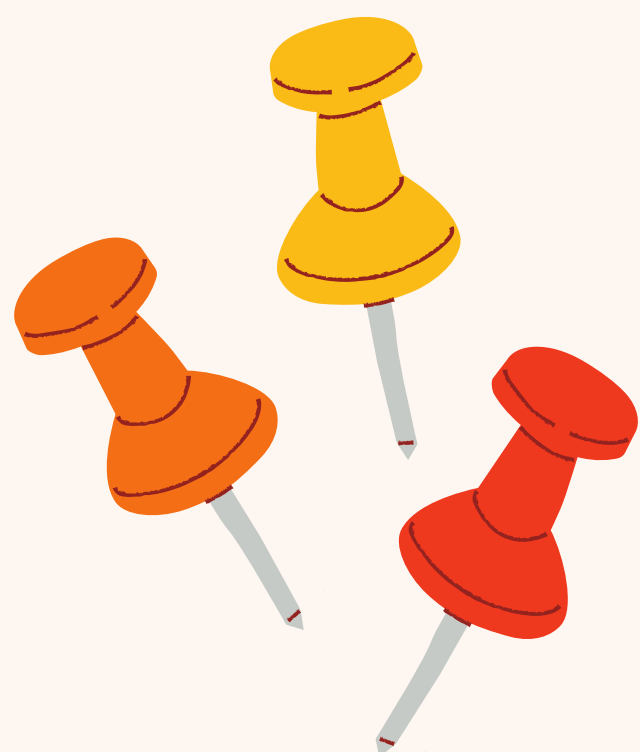
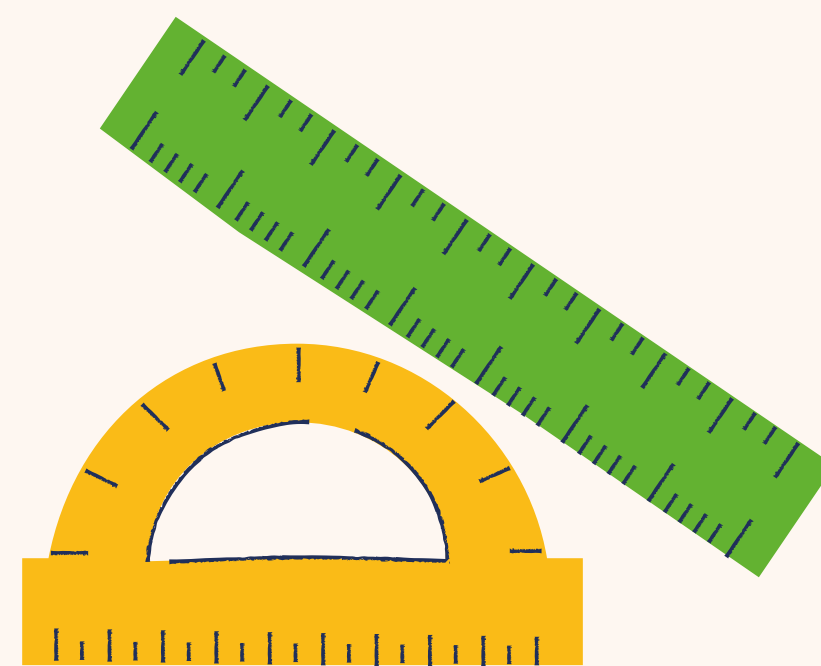
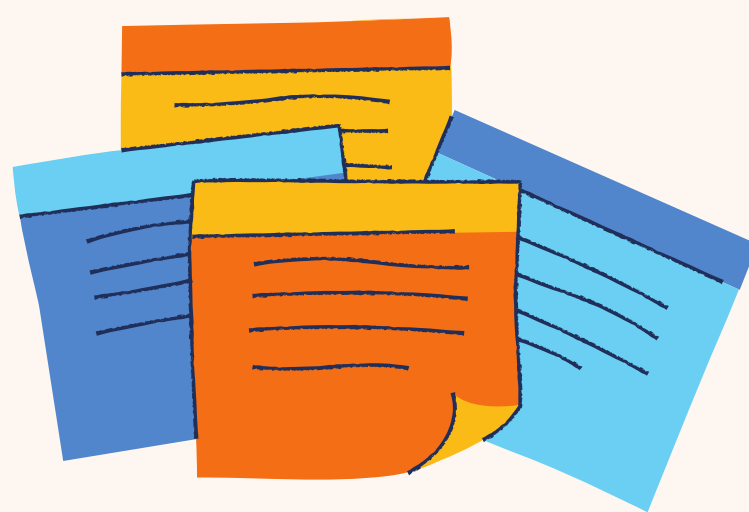
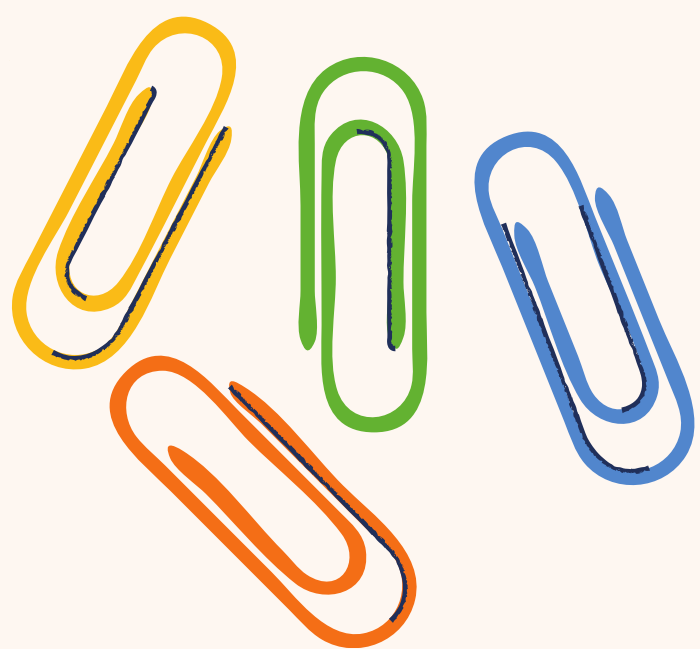
X

i

V

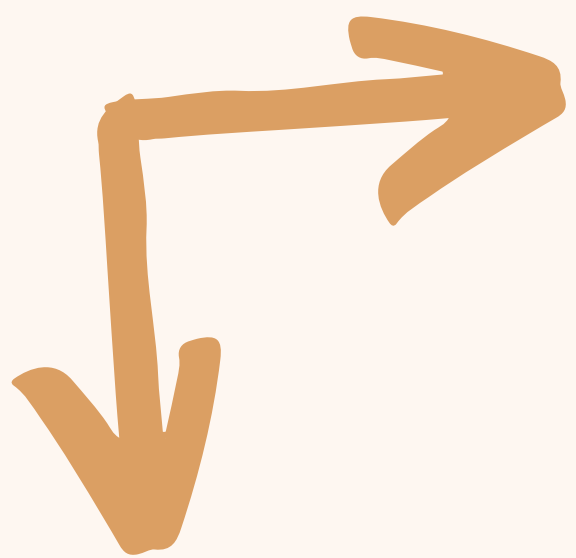
S

C



The word "LABERINTO" is centered on a background of three horizontal, overlapping orange brushstrokes. The brushstrokes have a textured, hand-painted appearance with irregular edges. The word is written in a bold, black, rounded, and bubbly font style.

LABERINTO



1

4

6

2

1

2

5

1

3

6

3

4

7

1

4

2

5

6

3

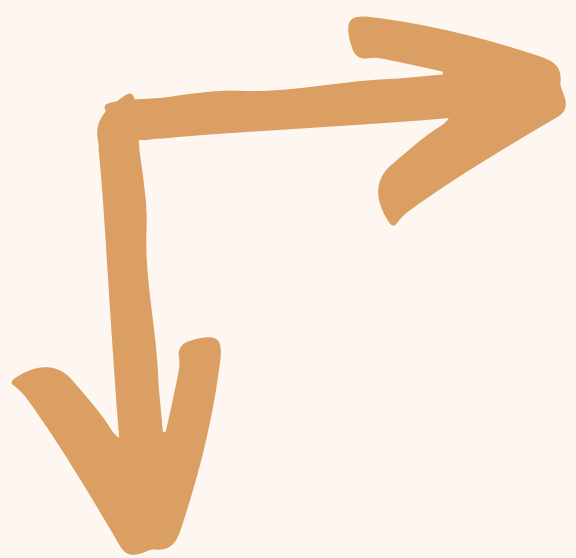
6

3

1

7





1

2

3

6

1

5

6

4

7

1

7

2

5

3

4

3

1

6

7

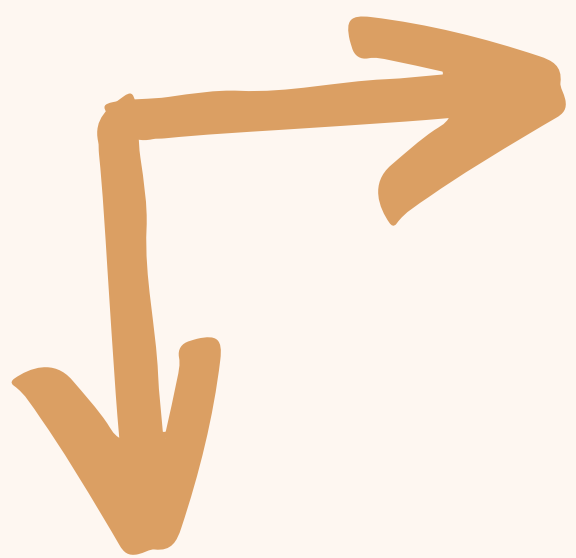
6

1

5

2





1

5

2

4

1

2

3

7

6

7

6

4

5

3

2

3

1

6

7

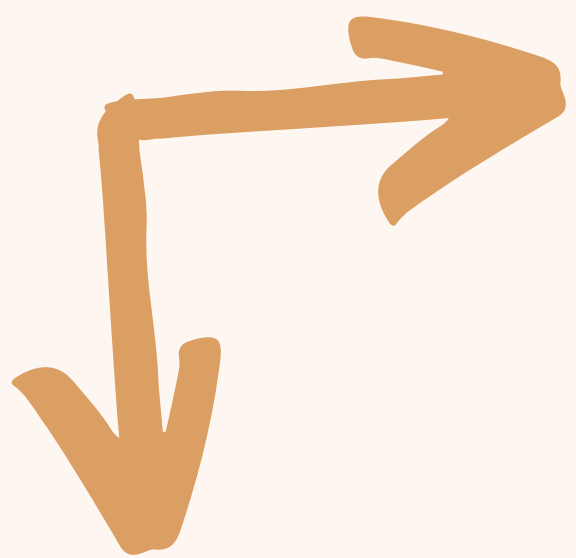
5

4

2

3





1

7

3

9

1

2

8

5

1

4

3

7

6

2

5

6

9

1

7

3

7

8

9



PARES

E

IMPARES

1	2	3	4	5
6	7	8	9	10



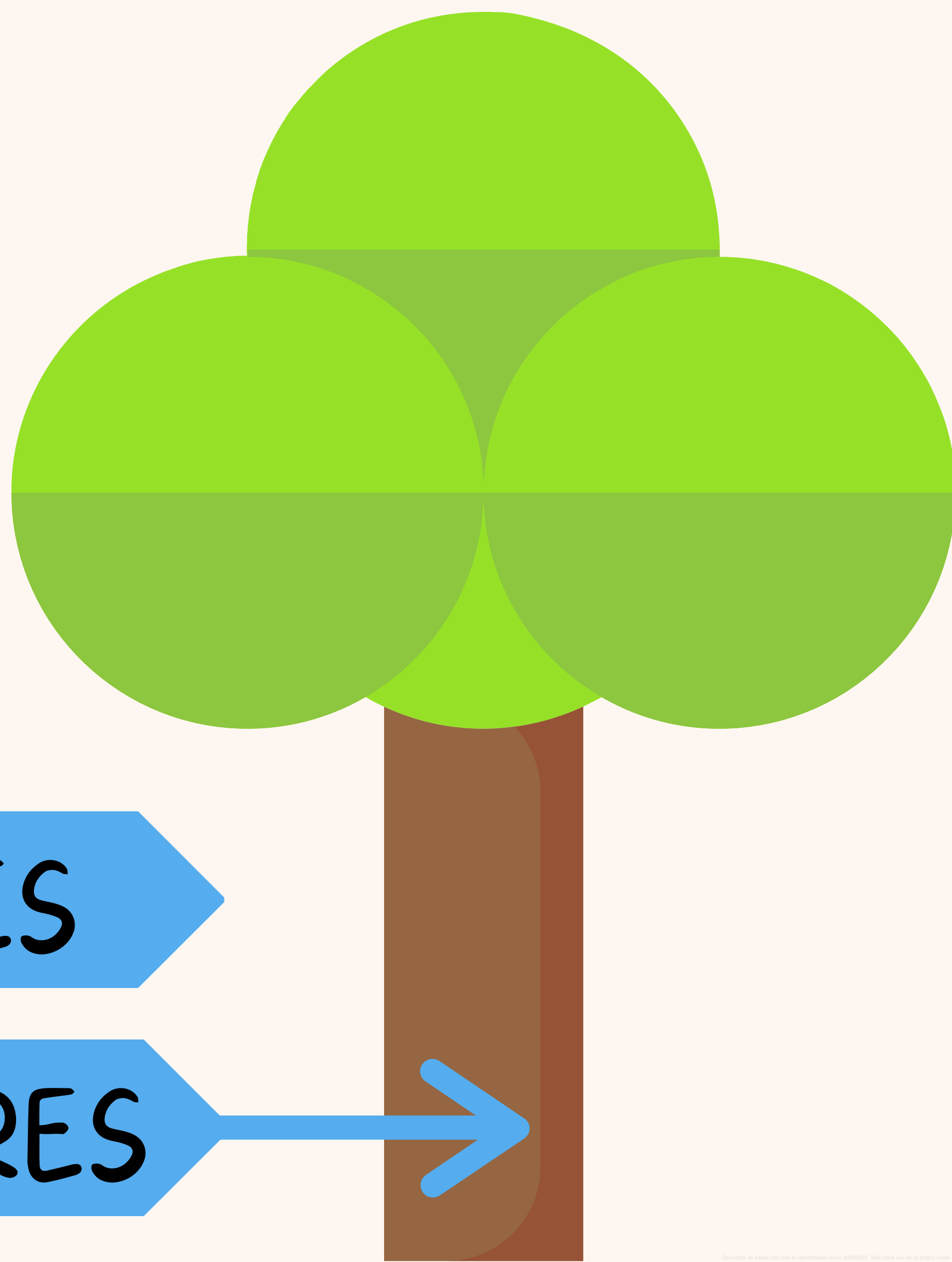
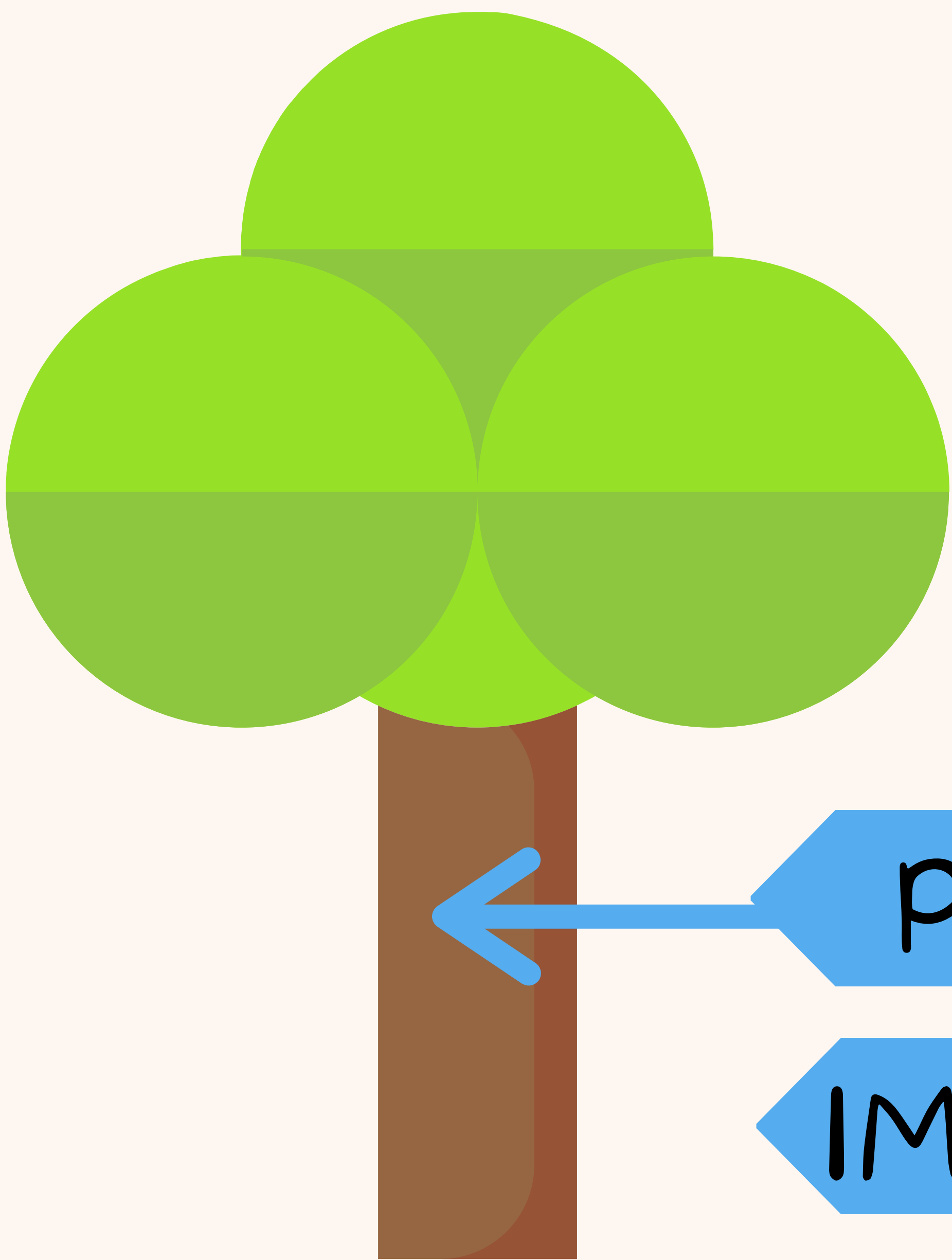
PARES



IMPARES



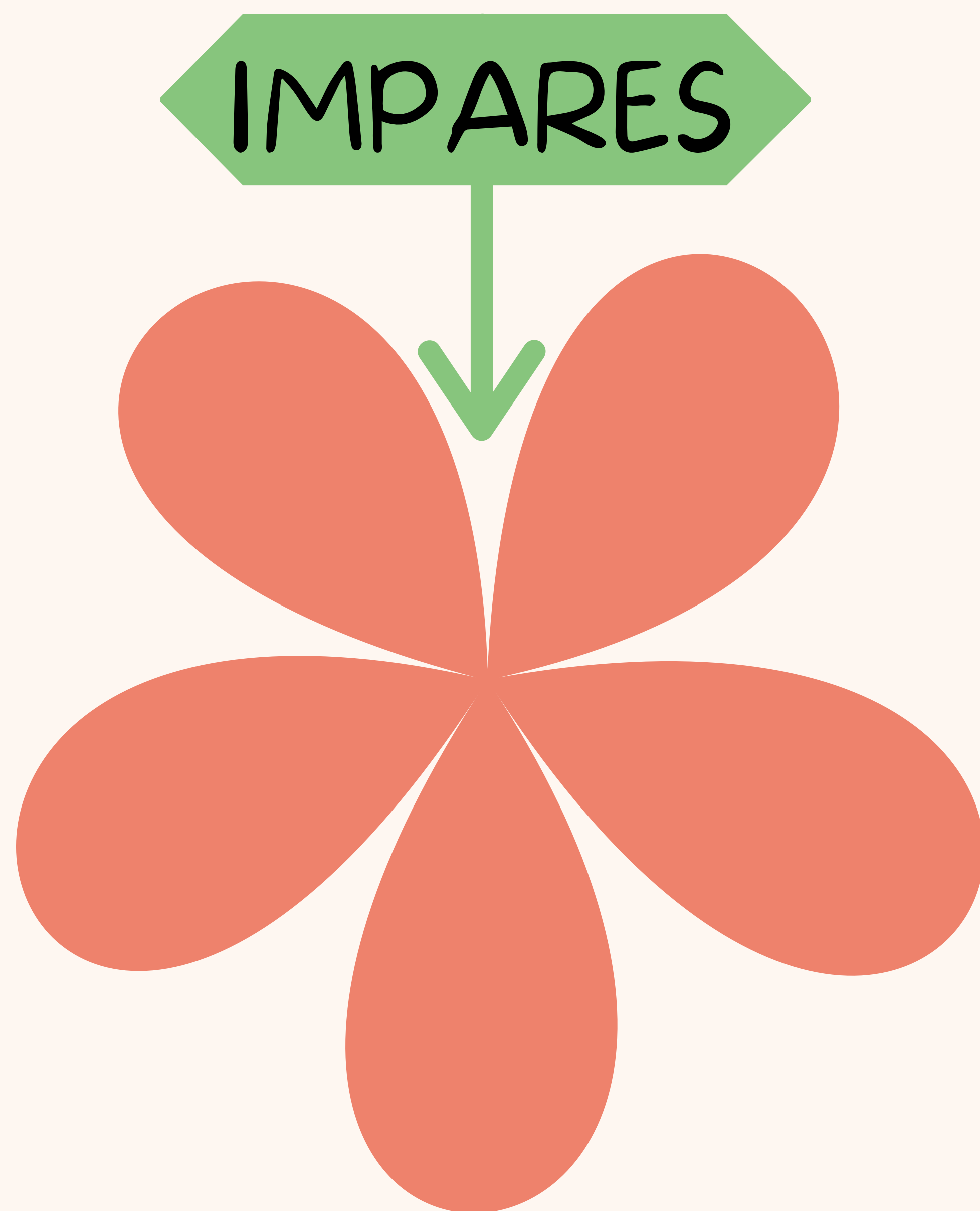
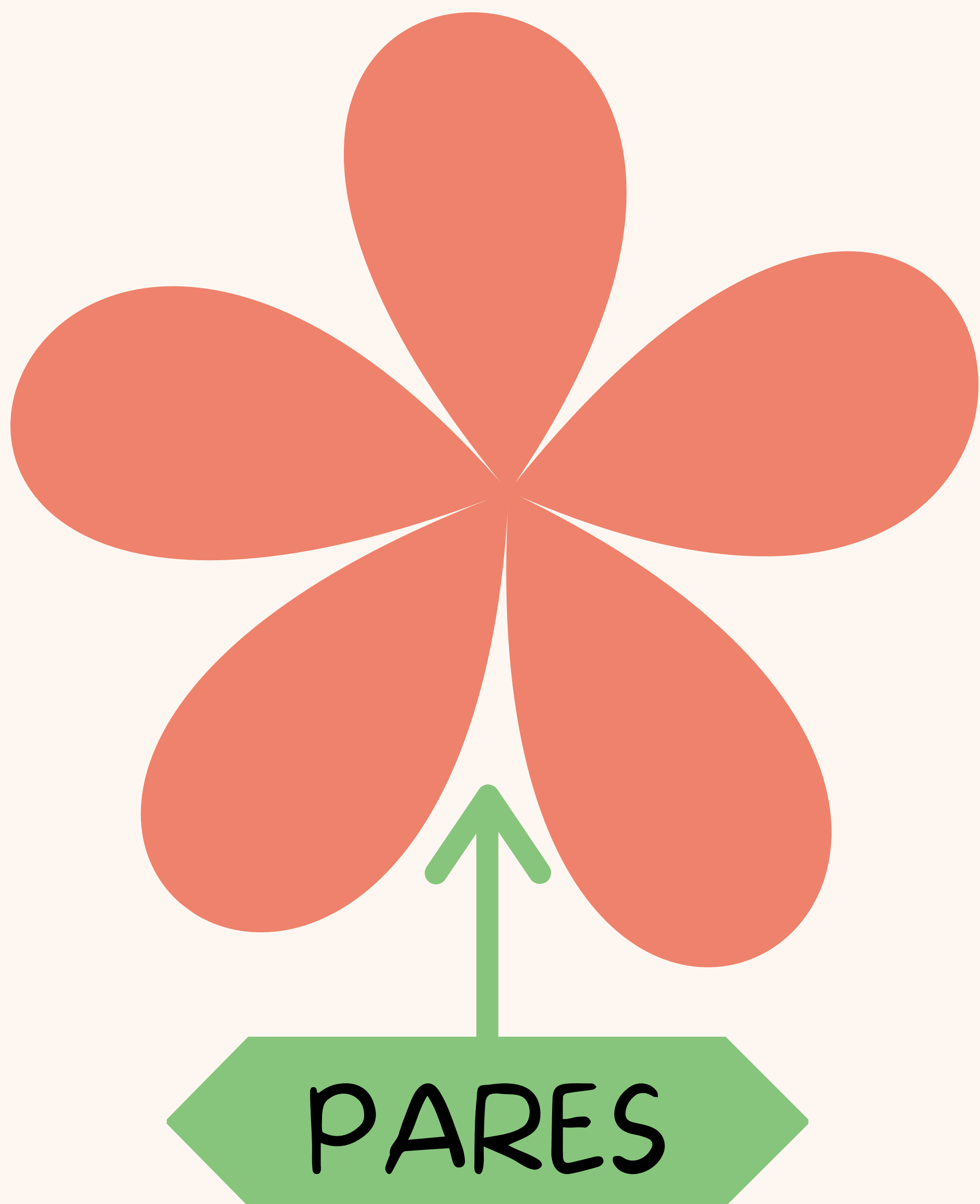
1	2	3	4	5
6	7	8	9	10



← PARES →

← IMPARES →

11	12	13	14	15
16	17	18	19	20



11	12	13	14	15
16	17	18	19	20



PARES

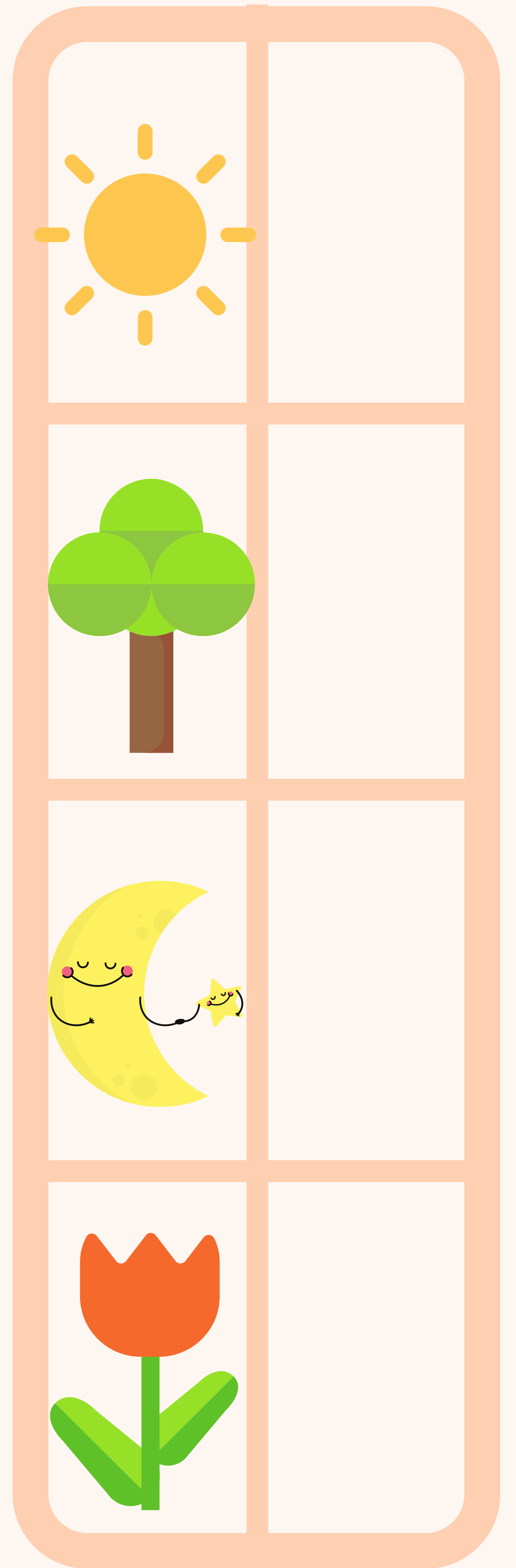
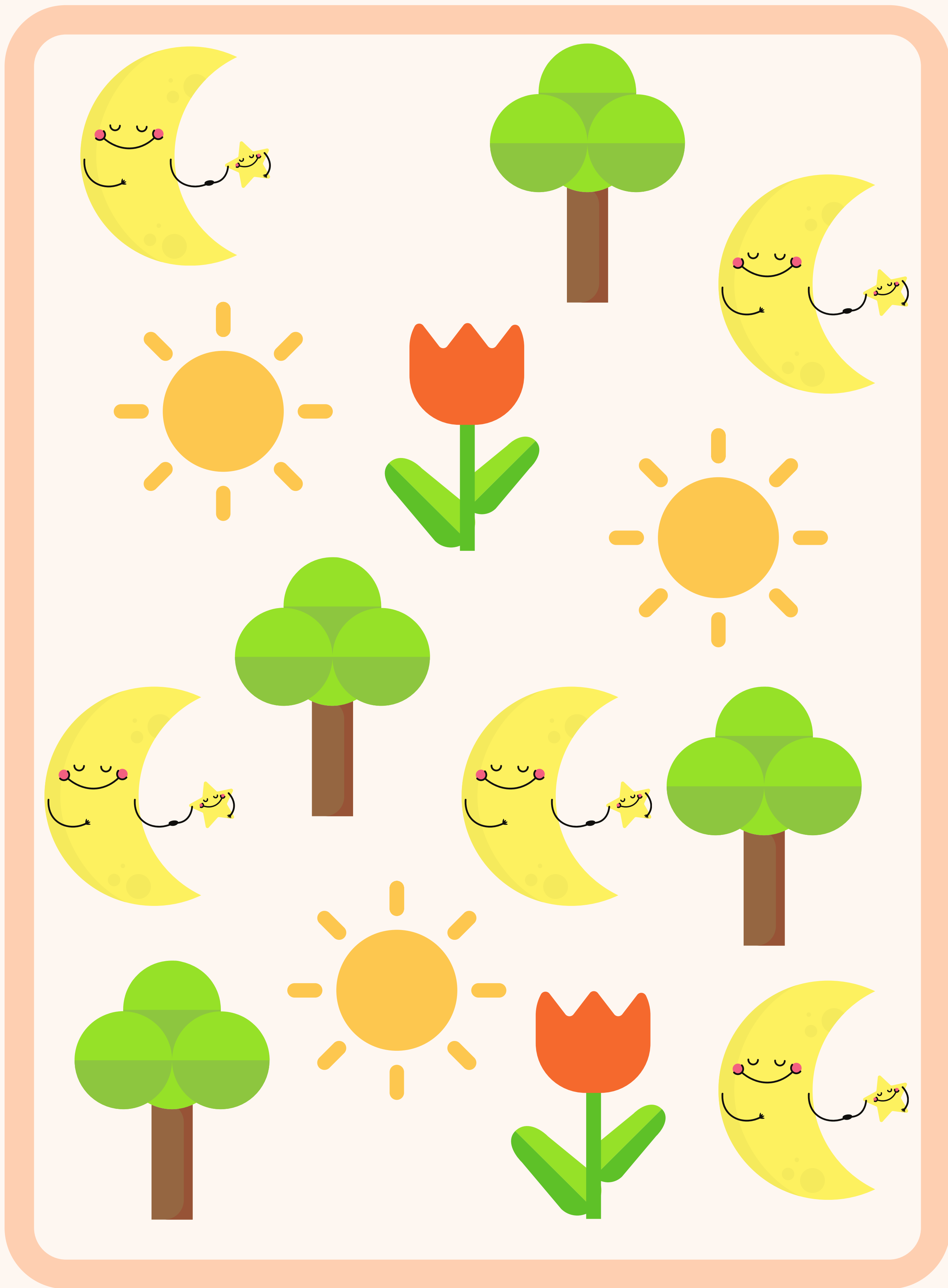


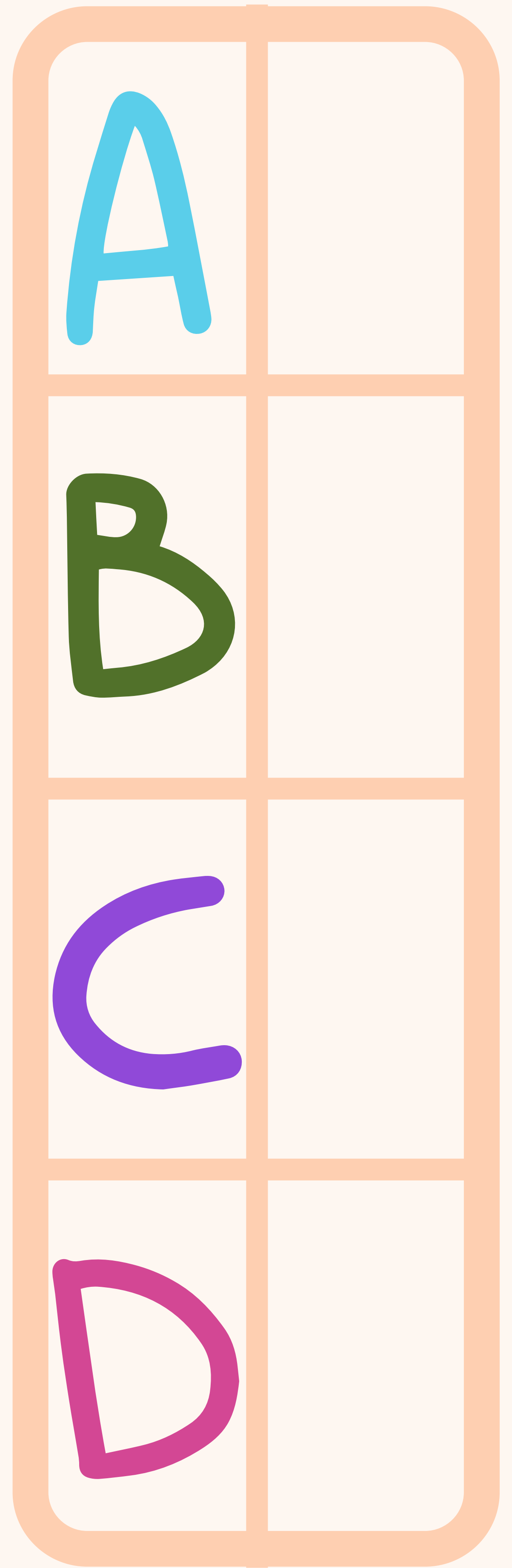
IMPARES

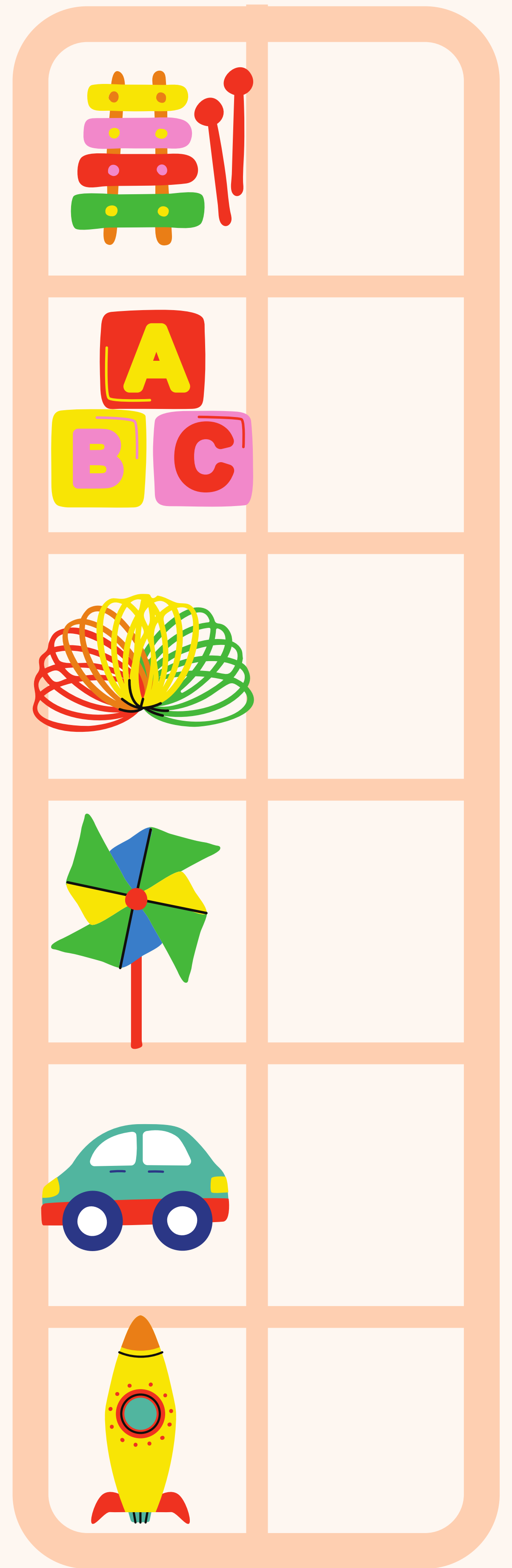
ENCUENTRA

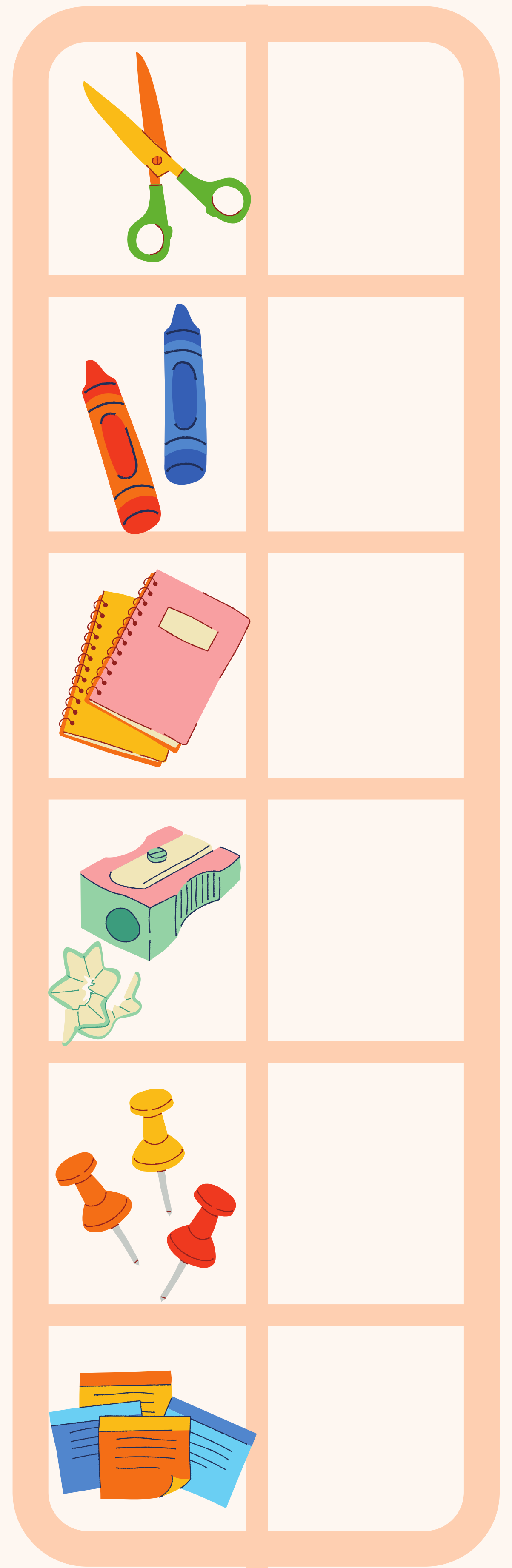
y

CUENTA









The background consists of several horizontal, overlapping brushstrokes in a light orange or peach color. The strokes have a textured, hand-painted appearance with irregular, feathered edges. The text is centered within this brushstroke area.

**FORMA
PAREJAS**

1

1

7

3

3

5

2

7

8

8

5

2

6

6

4

7

7

2

0

4

3

3

2

8

8

4

6

6

1

7

4

3

5

1

7

0

3

5

4

4

7

7

6

3

2

2

2

6

3

2

0

5

3

3

1

7

5

2

4

1

7

6

2

4

3

1

6

5

5

3

1

2

2

7

7

6

6

4

4

1

5

5

7

0

1

4

2

7

6

3

4

2

3

6

3

1

1

3

5

5

The background consists of several horizontal, overlapping brushstrokes in a light orange or peach color, creating a textured, hand-painted effect. The strokes are centered on the page and have irregular, feathered edges.

**SUMA
DOMINÓ**

