

# **Bolsos Carteras Complementos**

**Leandra Vallejos Martin**  
**Diseñadora de indumentria**  
**U.BA**



# Historia y evolución del bolso



# **El mas antiguo**

## **siglo V**



# Alemania

Era de Bronce



# chatelain

**Siglo XIV**



**Siglo XVII**



# Limosneros



# **Bolsos limosneros con bolsillos**



# Barroco

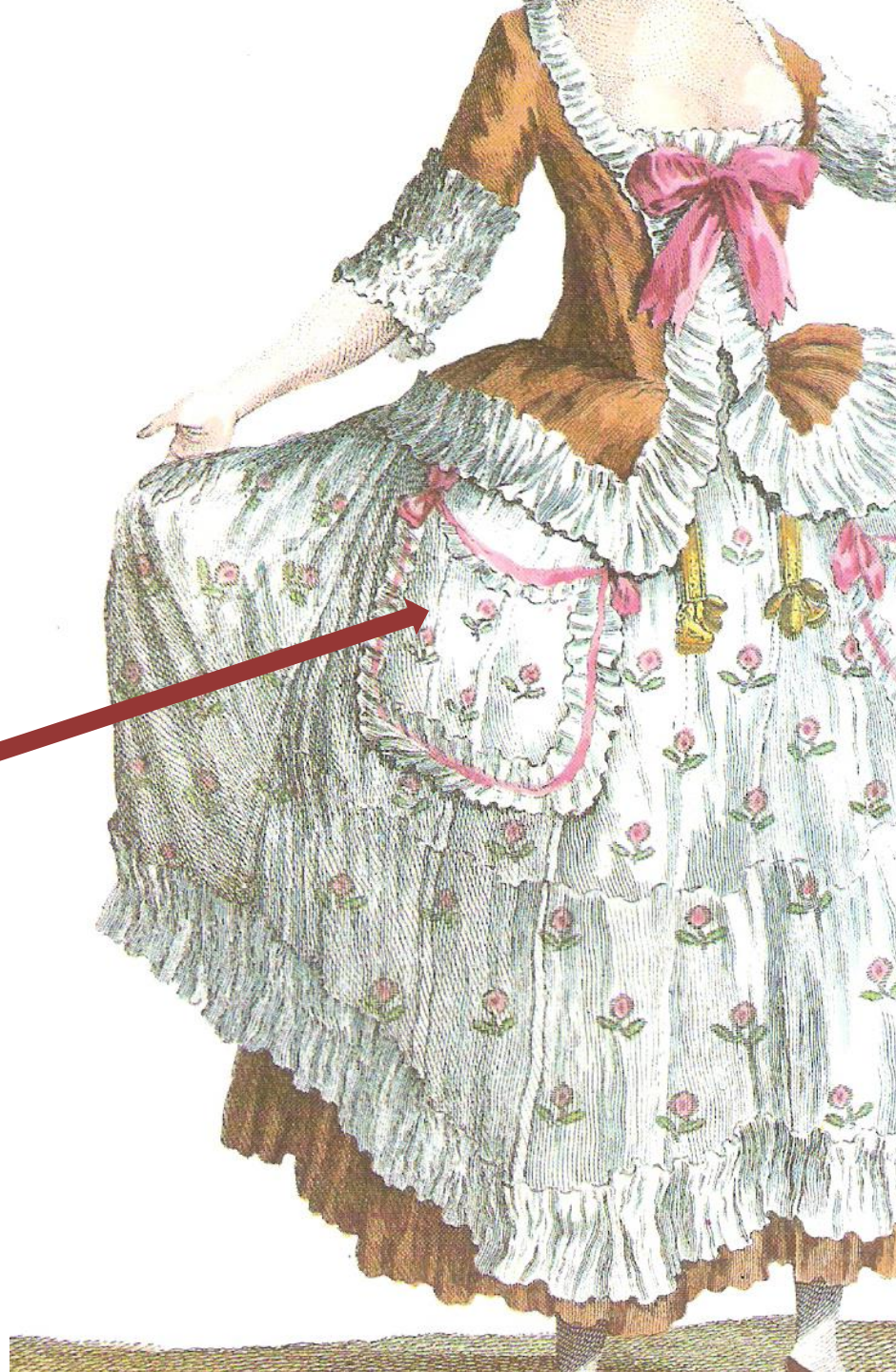
## Bolsillos en vestidos





# Bolsillos

hacia 1780





**Bolsillos ocultos**

# Rococo

Siglo XVIII



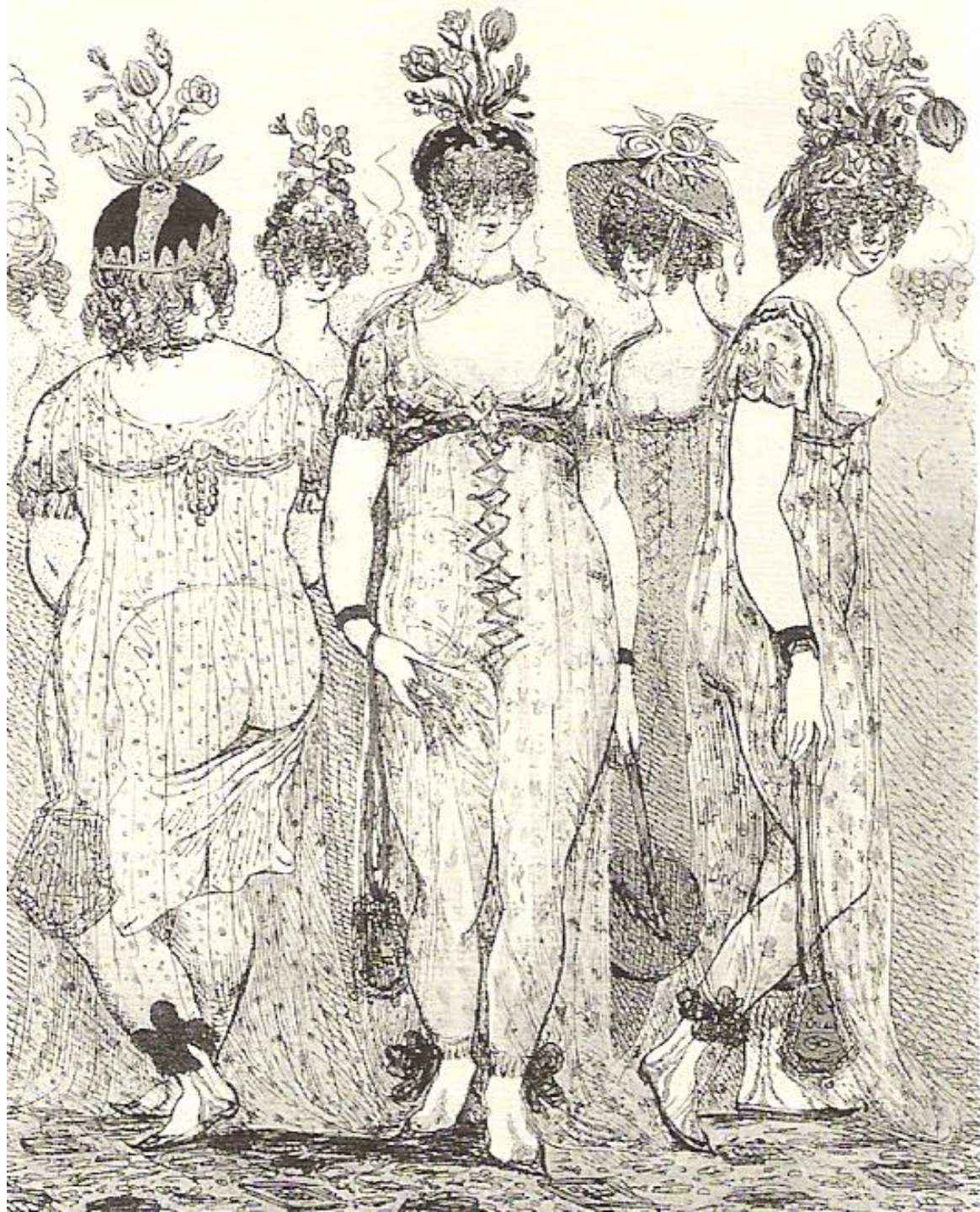
**Revolucion**

**Francesa**

**1789**

# Neo clasicismo

Estilo imperio  
hacia 1800



# **Nace el bolso de mano**

**Bolsa reticulo  
1810**



**Vestimenta**  
**y**  
**complementos**  
**hacia 1818**



# Reticulos - Ridiculos

**Cartera de mano 1800**



**Reticulo bordado 1830**





# Retículos 1820

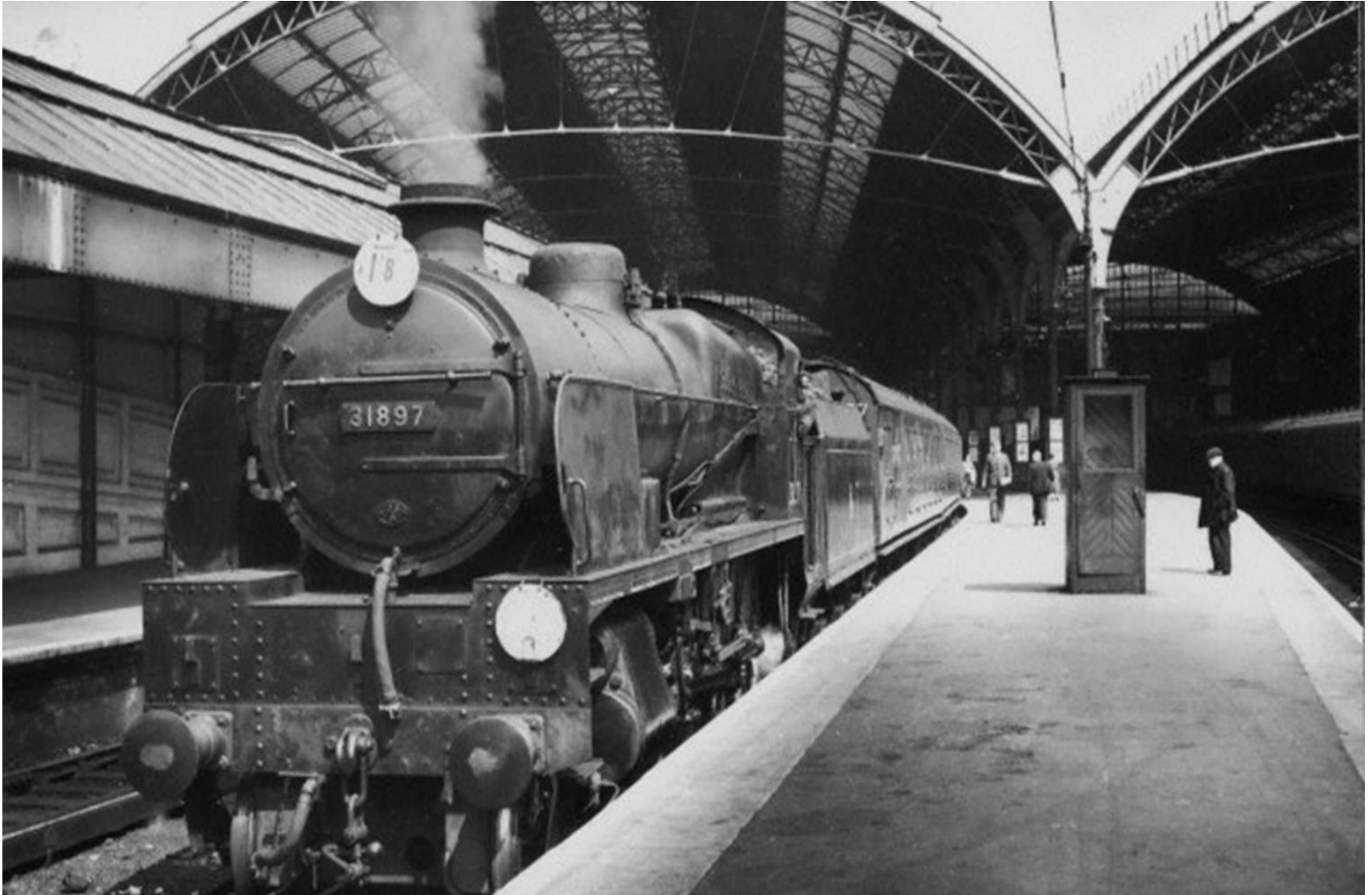


# La revolución industrial

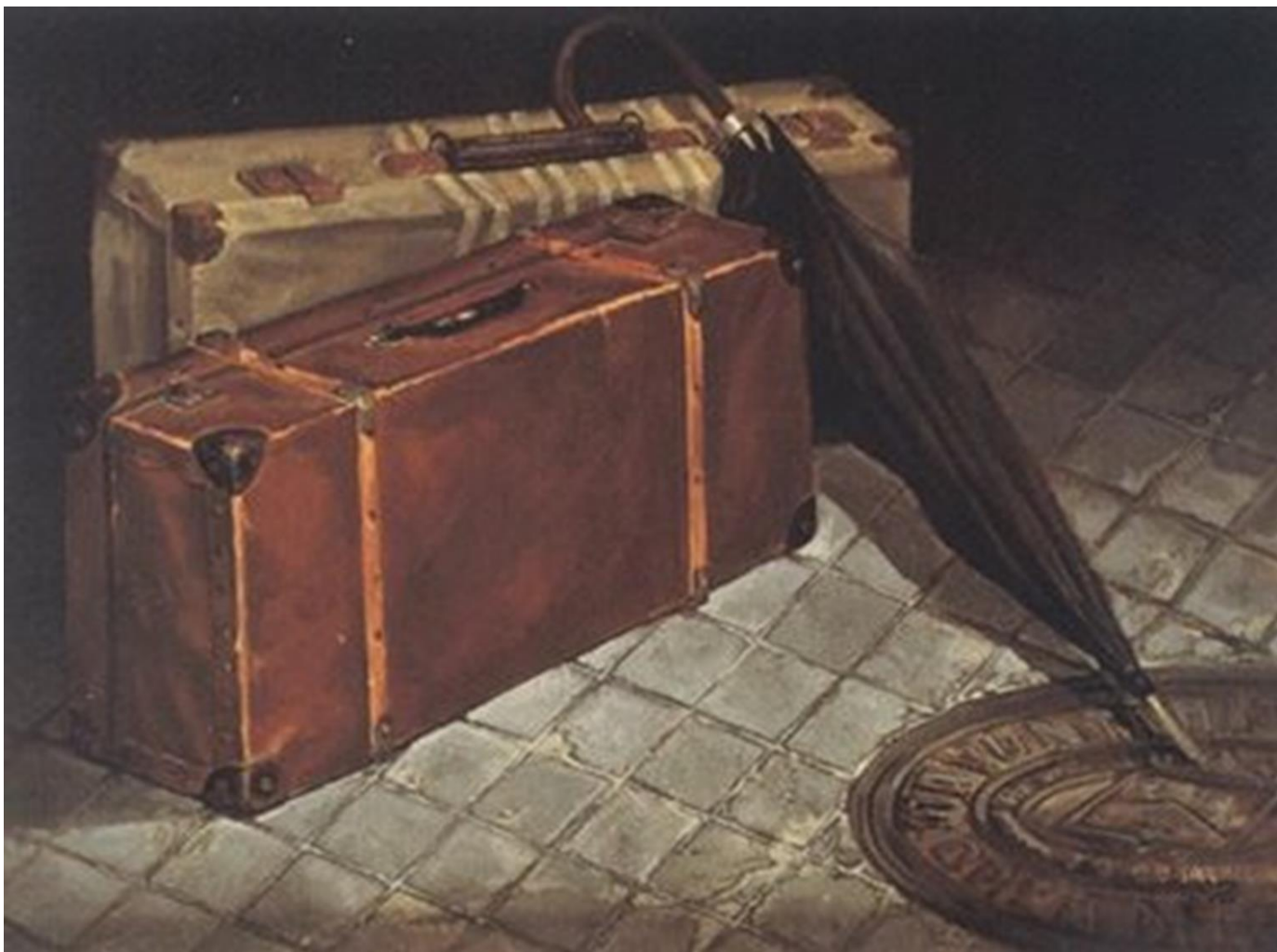
Hacia 1850

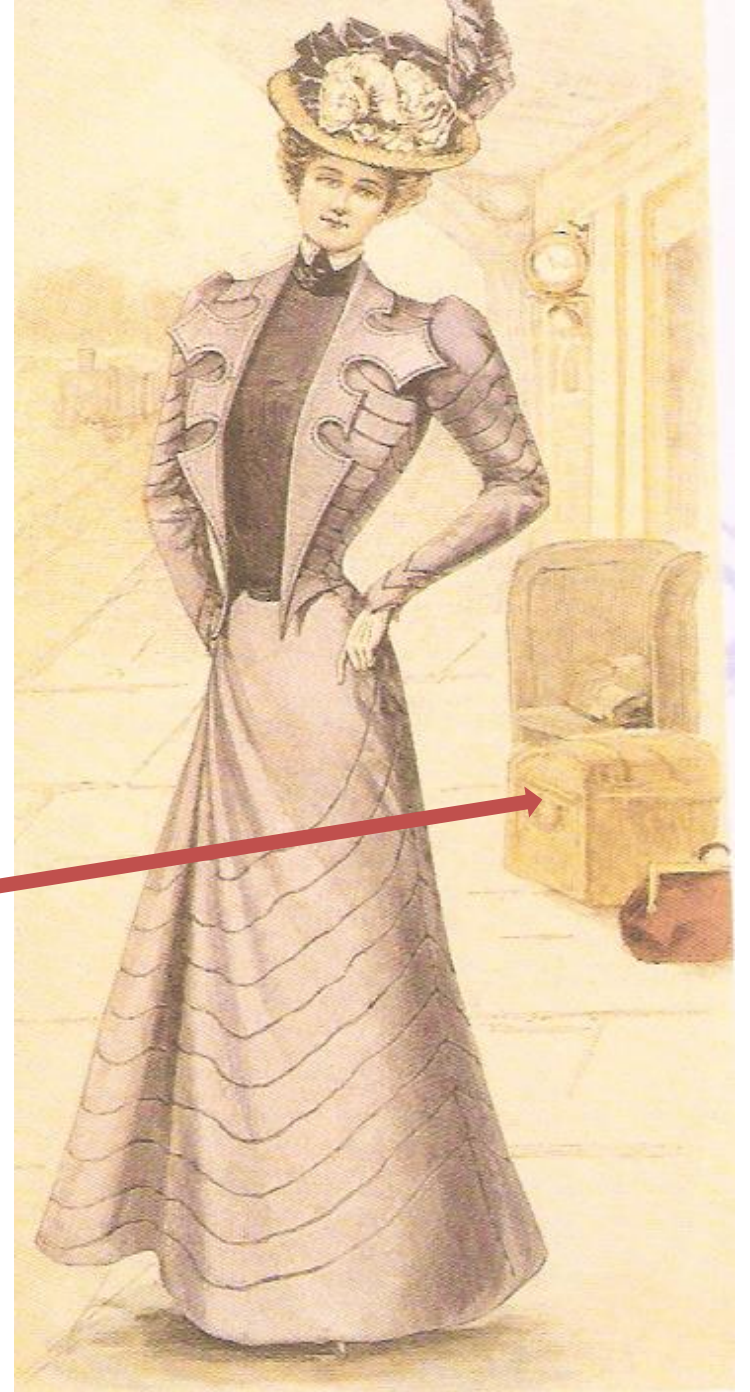


# Los viajes...



# Valijas y maletas de viaje





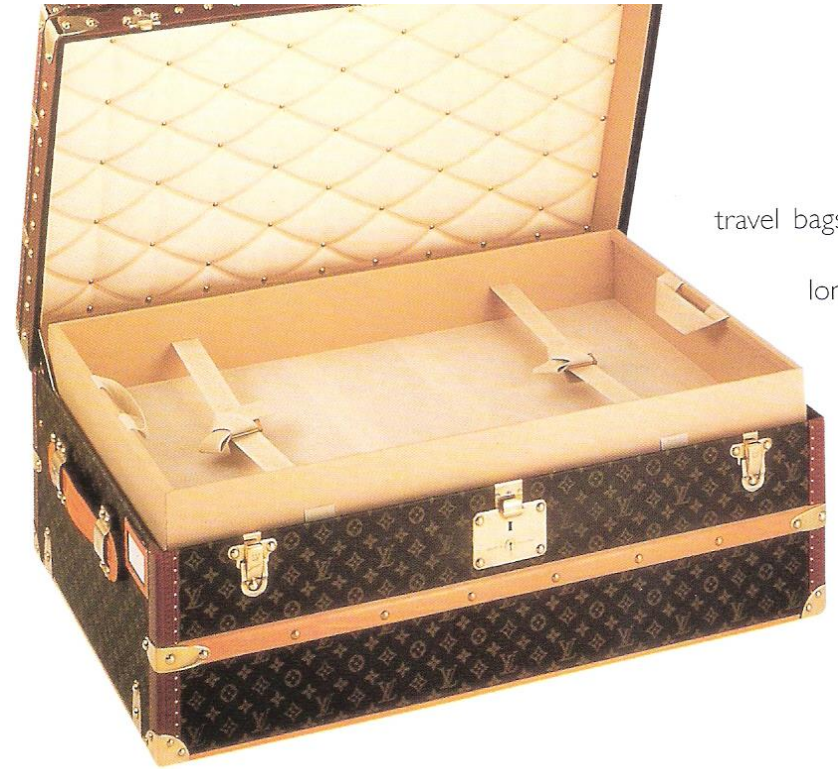
**Bolso de madera con bisagras de piel, asas de cuero  
y remaches metálicos (1850)**



# Nace una marca

**Louis Vuitton**

**1854**



travel bags

lon,

**Bolsos  
de paseo  
hacia 1860**





# **La Belle Époque Hacia 1900**

**Reminiscencias  
Medievales**

**Una mirada nostálgica  
hacia el pasado en la  
segunda mitad del siglo  
XIX, provocó el  
resurgimiento de todo lo  
romántico y medieval.**





**Surgen todo tipo de  
accesorios:**

**Bolsos de mano**

**Chatelain**

**Sombrillas**

**Paraguas**

**Sombreros**

**Prendedores**

**Collares**

**Joyas**







**Maletín de cuero y bastidor metálico con remaches.  
Forrado con tejido marrón (1890)**



# Primera guerra mundial

## 1914-1919



# La emancipación de la mujer

los años locos  
hacia 1920

Viajes, paseos, cines  
y teatros





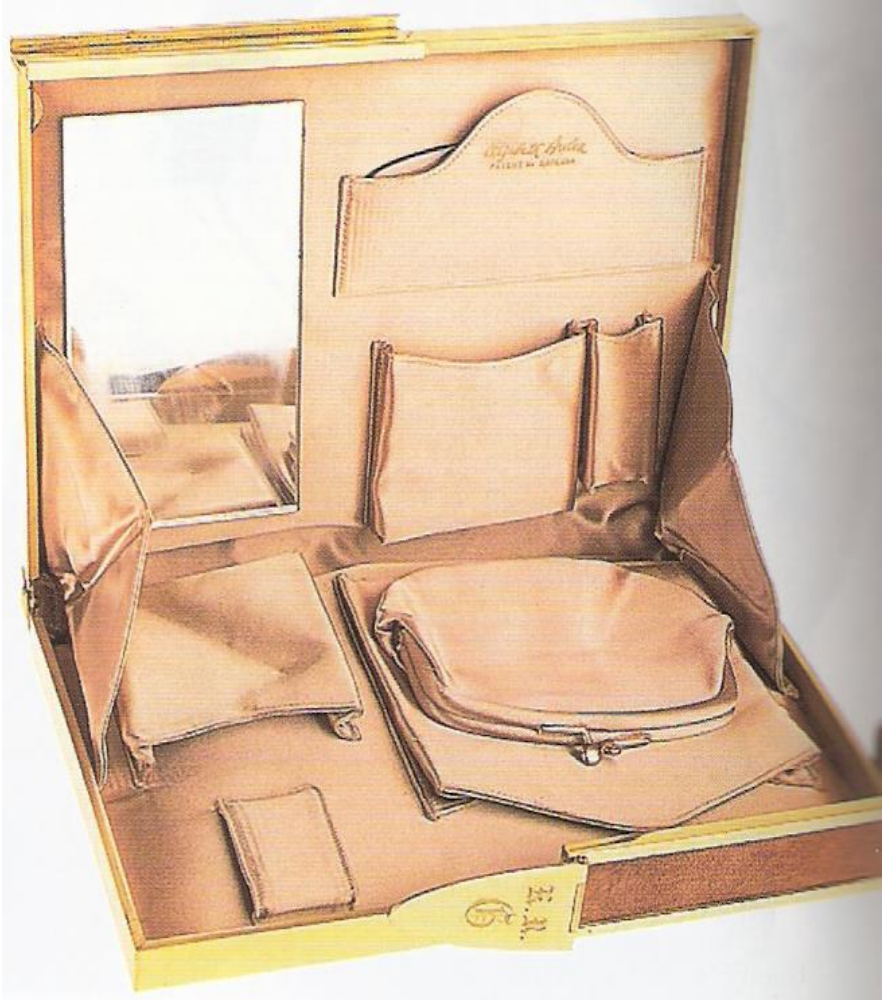
# 20` Una década de locuras y placeres



# **Surgen los neceser y porta cosmeticos**



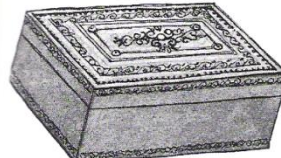
# Porta cosmeticos



# Porta cigarros



510



512

No. 510—Beautiful Italian Leather Note Tablet, in red, navy blue or brown; hand-decoration of gilt Florentine design; complete with tablet and pencil, 1.95

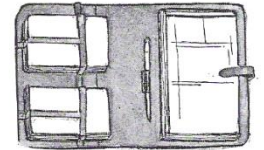
No. 512—Beautiful Italian Leather Cigarette Box, in red, navy blue or brown; hand-decoration of gilt Florentine design; cedar lined; length 6¼ inches, width 4 inches, depth 2¼ inches, 5.00

## Latest Novelties

From the Gift Shop

Street Floor

No. 518—English Bridge Set of fine ecrasé leather, in blue, rose, gray or purple; fitted with bridge score pad, pencil, two decks of cards, 6.95  
In purple, blue or red roan leather, 5.00

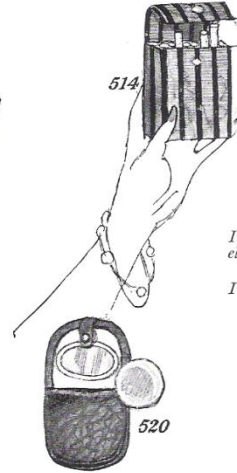


518

No. 514—New English Cigarette Case of black moire silk with black satin stripe; holds full carton of Camel, Lucky Strike or other cigarettes put up in same shape carton 3.95

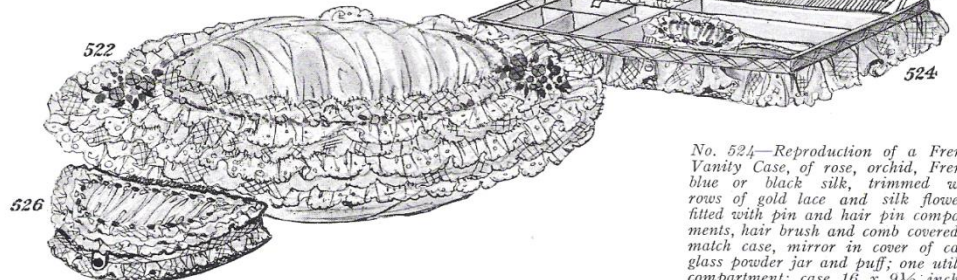
In black moire silk with elephant figures in gray silk, 5.00

In real crocodile leather 6.50



514

520



522

526

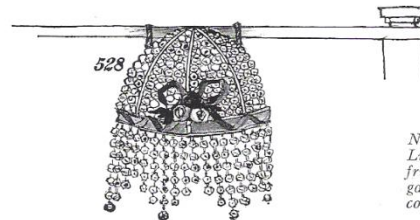
524

No. 526—Small Utility Box, in same colorings, with six compartments, to match vanity case No. 524; can be used for jewels; 9 inches long, 6 inches wide, 1½ inches deep, 5.95

No. 520—Smart English Vanity Case of beautiful rose, blue or violet ecrasé leather or black moire silk with self satin stripe; fitted with puff and mirror, very compact; lined with white kid leather, 5.00

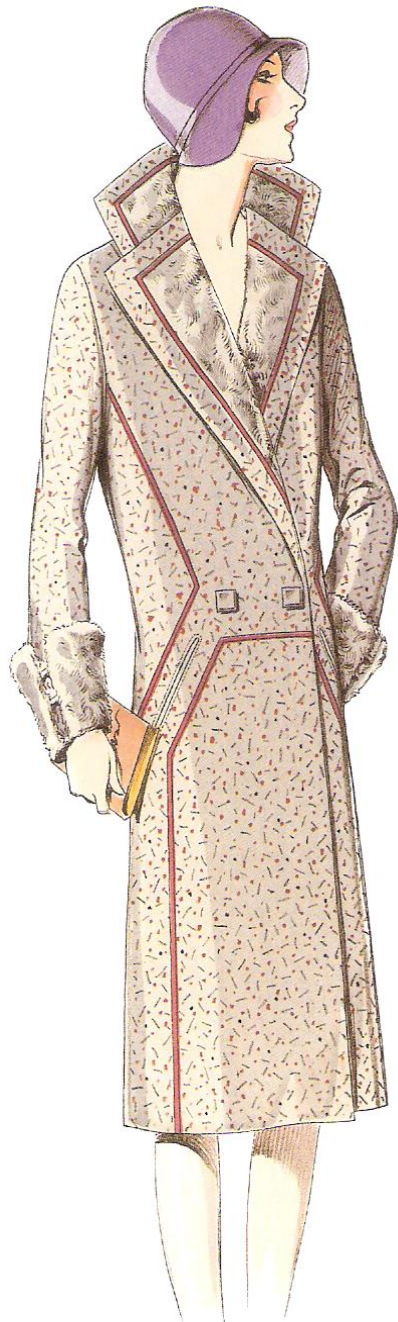
No. 522—Pillow of rose, orchid or French blue changeable silk trimmed with rows of gold lace, ecru val. lace, silk French flowers, 14.50

No. 524—Reproduction of a French Vanity Case, of rose, orchid, French blue or black silk, trimmed with rows of gold lace and silk flowers; fitted with pin and hair pin compartments, hair brush and comb covered to match case, mirror in cover of case, glass powder jar and puff; one utility compartment; case 16 x 9½ inches, 2½ inches deep, 26.00

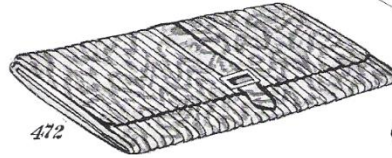


528

No. 528—Beautiful Hanging Bed Light of all crystal beads, graduated fringe of the same beads, trimmed with garland of imported silk flowers; complete with cord and plug for attaching, 17.50



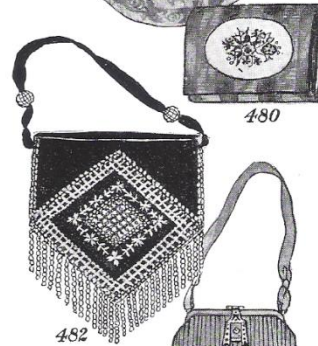
No. 472—New Paris Fashion Sous-Le-Bras Purse of moire silk; finely pleated; black, brown, navy, gray or beige; strap of moire silk through center; steel studded buckle clasp; 10 x 6 inches, 12.75



No. 478—One-piece Pouch Model Bag of imported black, navy or brown moire silk with self figured satin stripe; lift-up clasp of engraved glass; 7 x 6½ inches, 15.00



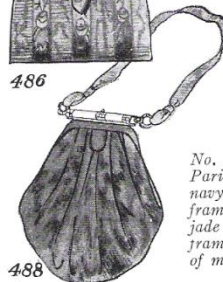
No. 482—French Bag of faille silk; black or navy; embroidered on both sides in beautiful design of fine cut steel beads; two inch deep fringe of cut steel beads 7 x 7 inches, 18.00



No. 486—New Flat-model Bag of imported moire silk; black, navy or brown; with self figured satin stripe; flap of material over frame, steel studded buckle clasp, 14.50



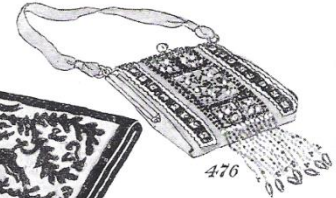
No. 488—Reproduction of a new Paris bag of moire silk; black, navy or brown; six pleats from frame on both sides; dark amber or jade color, or black tube shape frame finished with filigree designs of metal; 6½ x 6½ inches, 7.50



No. 474—New Paris Fashion Sous-Le-Bras Purse of imported black moire; front of purse entirely hand-embroidered in beige, sapphire, gray or red silk in smart design; finished with outline of gold color thread; also in brown moire with beige; 10 x 6½ inches, 18.00



No. 476—Reproduction of a new Paris Bag of moire silk; black, navy or gray, embroidered with jade, sapphire, red or gray beads; also brown embroidered with tan or jade, black or brown embroidered with brown; 4¼ x 5 inches, 9.75



No. 480—Reproduction of a new Paris flat vanity of moire silk; black, brown or navy with self satin stripe; real pette point insert on front of purse; strap handle on back; 5 x 3½ inches, 9.75



No. 484—New Pleated Silk Bag; black navy, brown or gray; beautiful sterling silver enamel lift-up clasp studded with marcasites; inside compartment; 5 x 5¼ inches, 8.75



No. 490—French Bag of faille silk, black or navy, embroidered on both sides with fine cut steel beads; fancy ball fringe; 4½ x 7½ inches, 12.00



Reproductions of Paris Model Bags

Novelty Bag Shop—Street Floor

No. 492—Bag of imported satin striped moire silk, black, navy or brown; mounted on silver-plated openwork engraved frame; 8½ x 8½ inches, 9.75



# La decada del 30'

Elegancia, lujo y sofisticación

Asprey  
BOND ST LONDON

Brocade. 3.7.6  
Hand Embroidered. 16.12.6

*Aspreys have an enormous display in their Showrooms*

Hide Leather. 5.4.6

Hide Leather. 4.5.0

Loomed Leather. 5.17.6

Morocco Leather. 21/-

Crocodile 9.5.0

Morocco Leather. 21/-

Hide and Crocodile Leather. Rip fastening. 2.15.0

Hide Leather. 2.12.6

Moiré Silk.

Kasha Scarf and Pochette. 4.17.6

Hand Embroidered. 16.12.6

The advertisement displays a collection of Asprey handbags and accessories. At the top, there are two hand-embroidered bags with intricate floral patterns. Below them are several leather bags in various colors and textures, including red, brown, and green. A crocodile-textured bag and a Morocco leather bag are also featured. A dark green bag with a crocodile texture and a rip fastening is shown. A red bag with a moiré silk texture is at the bottom left. A striped scarf and a small pochette are in the center, and another hand-embroidered bag is at the bottom right. The Asprey logo and name are prominently displayed at the top, along with the address 'BOND ST LONDON'. A handwritten-style quote reads 'Aspreys have an enormous display in their Showrooms'. Prices are listed for each item.

**Comienza la  
segunda  
guerra  
mundial  
1939-1945**



**El new look  
de Christian Dior  
Hacia 1947**







# **La década del 50º**

**Un estilo fresco  
renovado  
alegre**

# Grace Kelly

## 1954



# Versión actual



Kelly  
Bag



# Coco Chanel

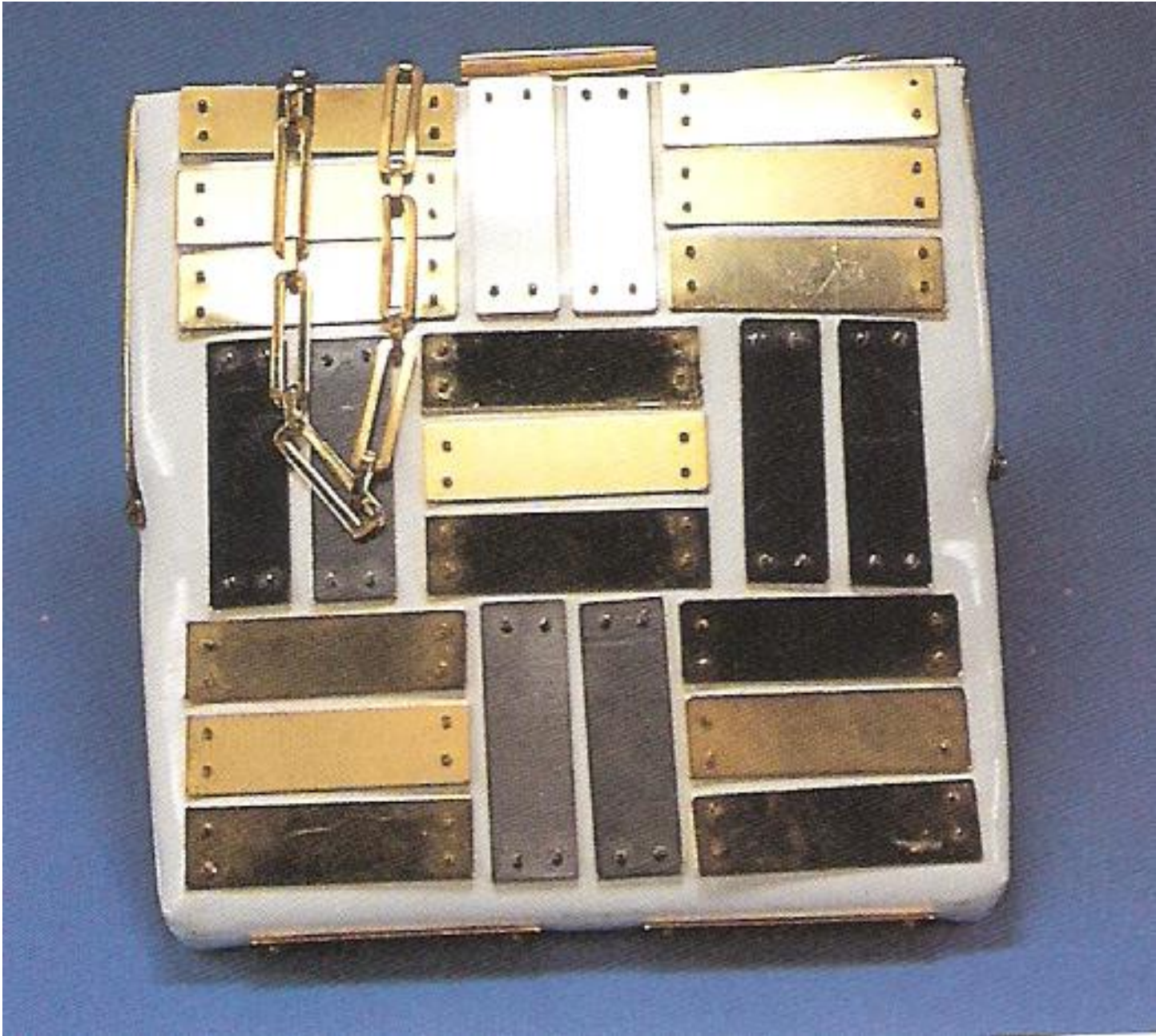
## 2-55



# **Década del 60`**

**La llegada del  
hombre a la luna**









# La década del 70`

Paz y amor



# Jane Birkin con su bolso de paja



# **El Birkin Bag**

**en la actualidad**





# Publicidad de Hermès

## Birkin Bag



# Jane Birkin

en la actualidad





**Hacia  
fines  
de los 70'**







# Los 80`

## El jogging

# Los yuppies



# Los 90`

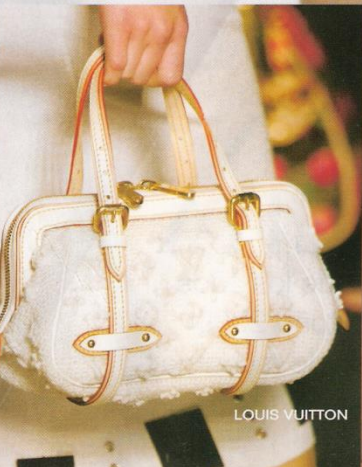
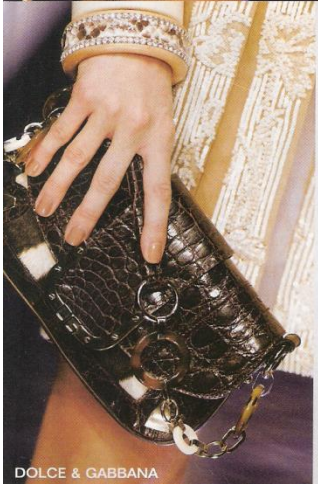
the seriously wealthy, like Jemima Khan and Madonna, have come to epitomize the trend to appear elegantly down at heel – at a price unaffordable to those who really are. Gucci enjoyed a hugely successful revival in the hands of American designer Tom Ford, who began to reintroduce logos back onto the catwalk, and soon it was cool again to have a designer bag. In response, Chanel has created the first ergonomically designed handbag – the 2005 (see below) – which is shaped to fit the contours of the body. It is ironic that in the last year of the twentieth century, the fashion pack announced the death of the handbag as we



know it. The functional 'body bag' in high-tech, utility fabrics by directional designers such as Helmut Lang (see right) and Prada are a welcome change for modern women who are only too happy to let go of prim little handles and embrace the new millennium, hands-free and with open arms.



# Un nuevo siglo Año 2000

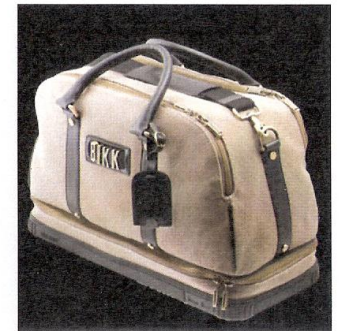
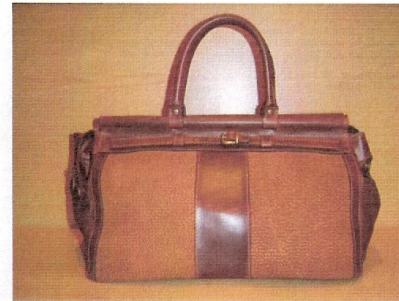


# Tipologías

# TIPOLOGIAS DE BOLSOS



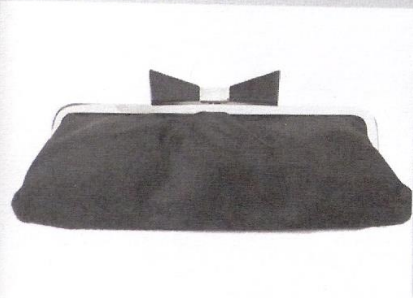
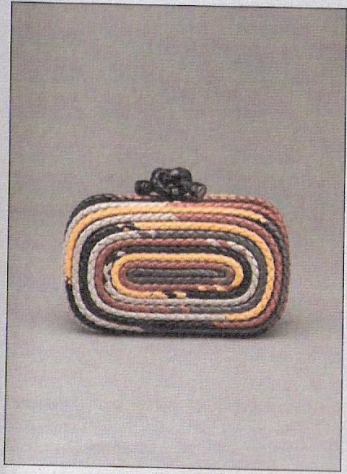
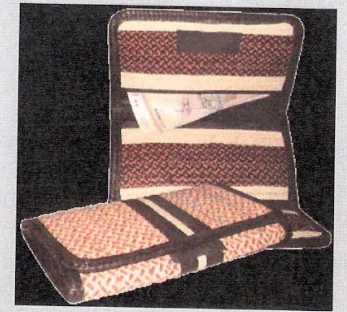
pinkaholic



# Tipología Bolso

- **DEPORTIVOS**
- **MOCHILA**
- **RIÑONERA**
- **MARINERO**
- **VALIJAS**
- **MORRAL**
- **BANDOLERA**
- **ATTACHE**
- **PORTA NOTEBOOK**
- **PORTA COSMETICOS**
- **NECESER**
- **BOTINERO**

# TIPOLOGIAS DE CARTERAS





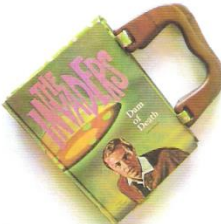
# Tipología Cartera

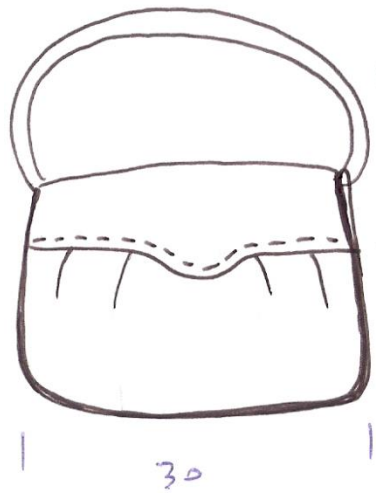
- **DE FIESTA**
- **DE MANO**
- **PELLIZCO**
- **PORTAFOLIO**
- **SOBRE**
- **BAGUETTE**
- **MONEDERO**
- **SHOPING**
- **PORTA CELULAR**

# Bolsos



# Carteras





P1331

10

33

30

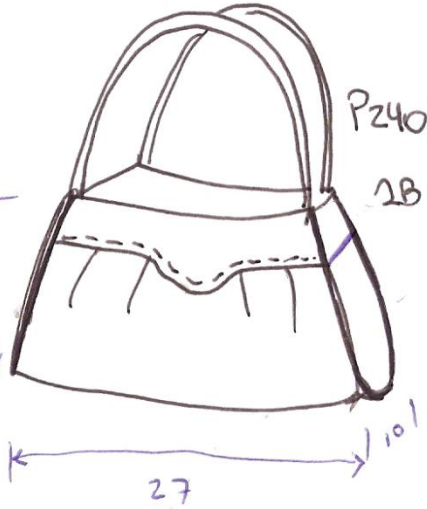


P219

10

17

30

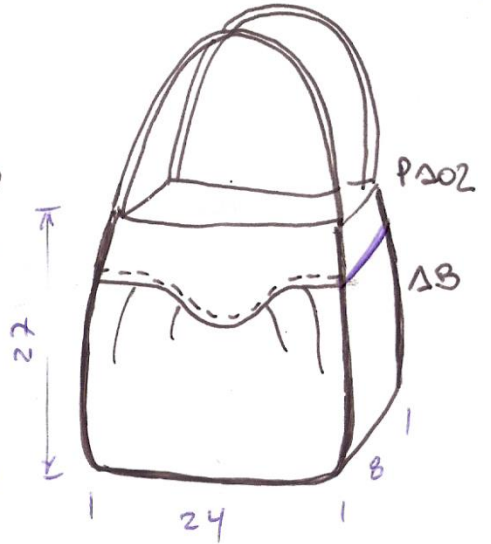


P240

10

27

10



P202

10

27

24

8



42

P187

10

22

26



P157

10

16

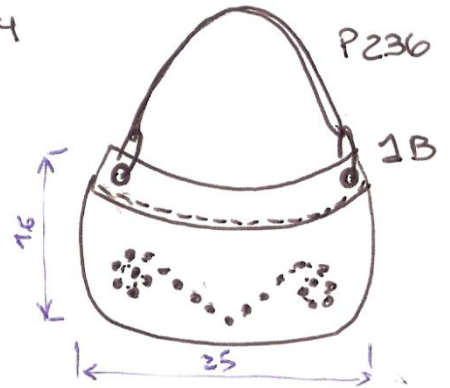
28



P204

10

27

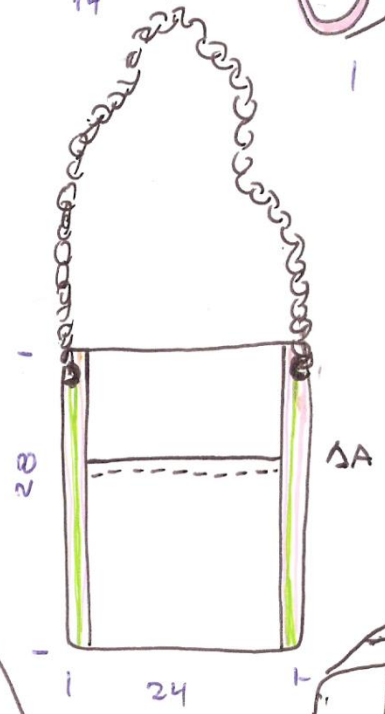
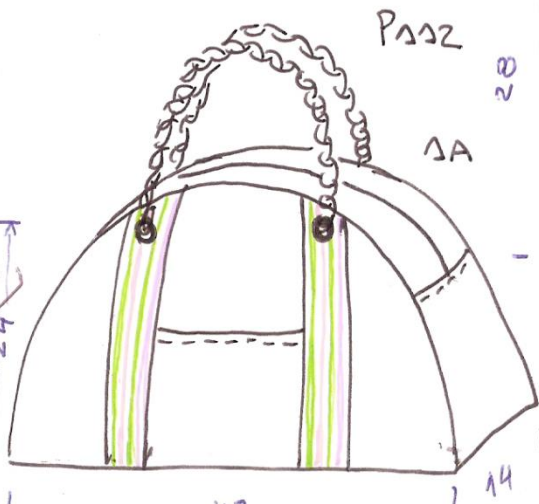
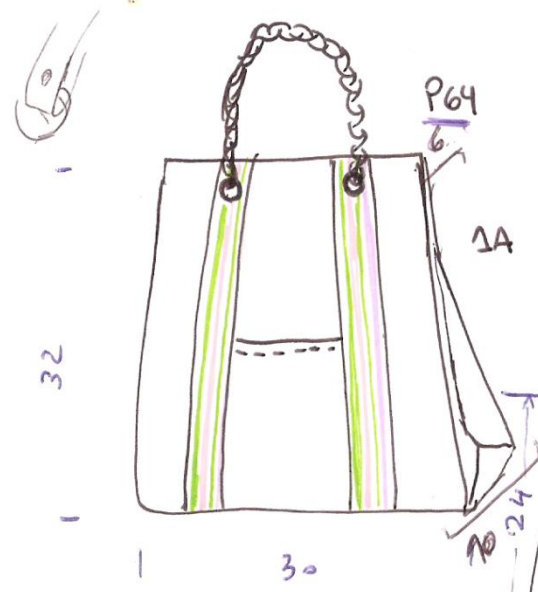
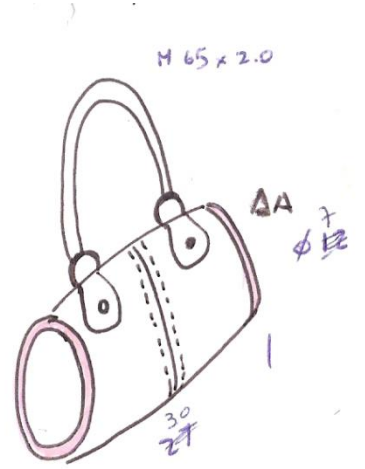
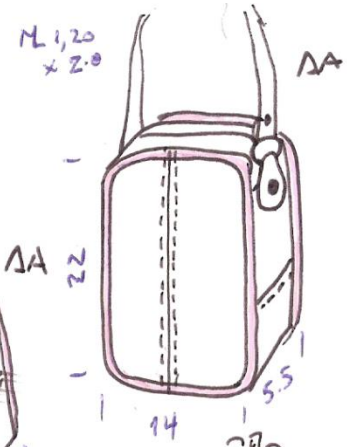
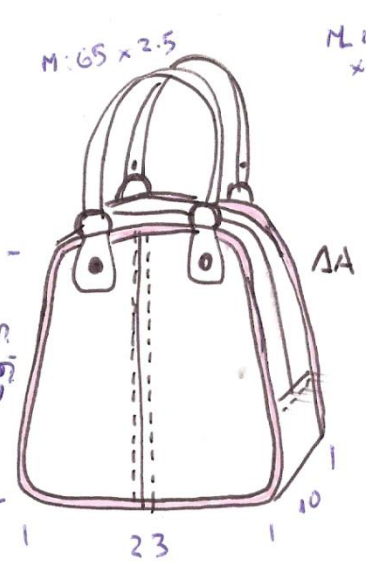
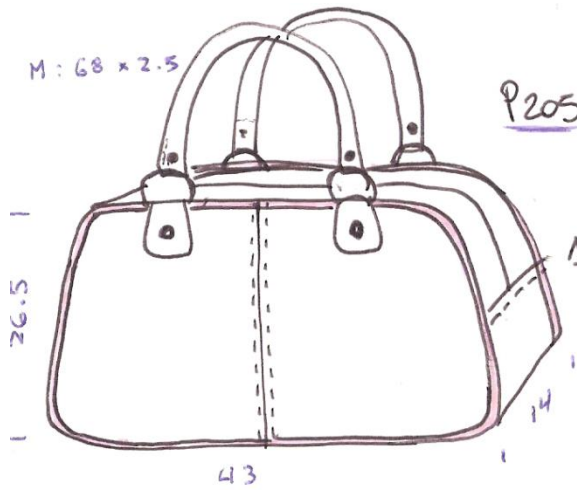


P236

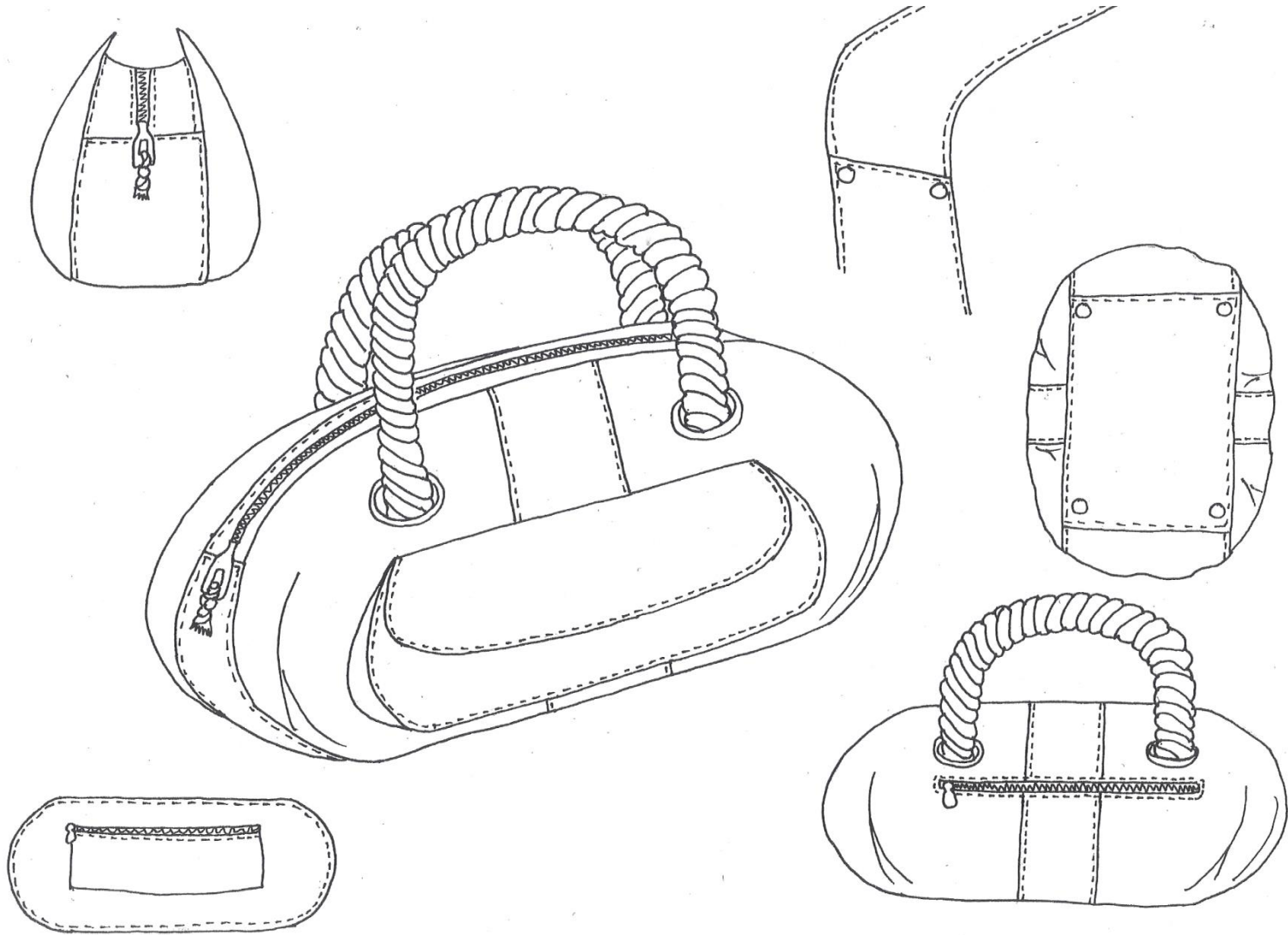
10

16

25



# Tipología Bolso



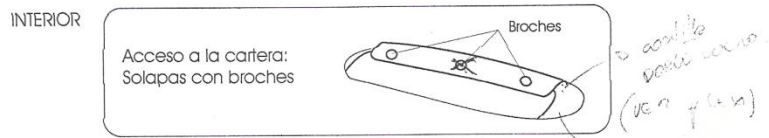
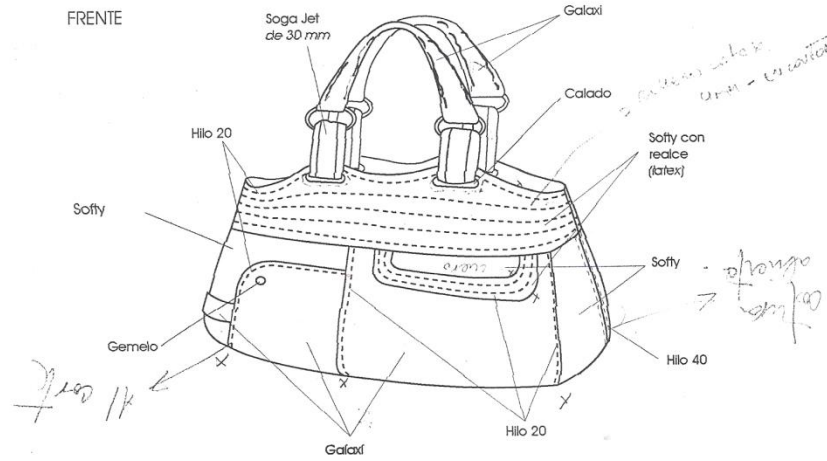
# Tipología Cartera

Detalles de construcción:

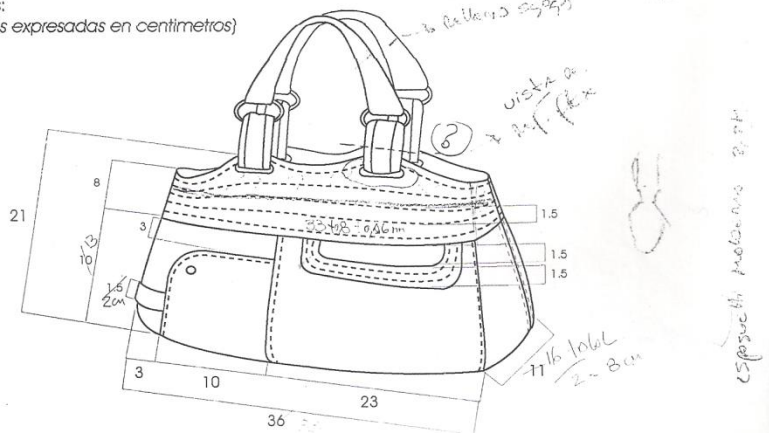
Jet

Cuero: Softy y Galaxi

Nombre:



Medidas:  
(medidas expresadas en centímetros)



# Carta de tendencias

